

## Product datasheet for **TA345004**

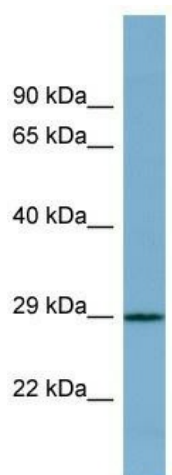
### PRR16 Rabbit Polyclonal Antibody

#### Product data:

Product Type:	Primary Antibodies
Applications:	WB
Recommended Dilution:	WB
Reactivity:	Human
Host:	Rabbit
Isotype:	IgG
Clonality:	Polyclonal
Immunogen:	The immunogen for anti-PRR16 antibody: synthetic peptide directed towards the middle region of human PRR16. Synthetic peptide located within the following region: RERVRFNEKVQYHGYPDCDTRYNIKNREVHLHSEPVHPPGKIPHQGPPL
Formulation:	Liquid. Purified antibody supplied in 1x PBS buffer with 0.09% (w/v) sodium azide and 2% sucrose.
Purification:	Affinity Purified
Conjugation:	Unconjugated
Storage:	Store at -20°C as received.
Stability:	Stable for 12 months from date of receipt.
Predicted Protein Size:	30 kDa
Gene Name:	proline rich 16
Database Link:	<a href="#">NP_057728</a> <a href="#">Entrez Gene 51334 Human</a> <a href="#">Q569H4</a>
Background:	The function of this protein remains unknown.
Synonyms:	DSC54; LARGEN
Note:	Immunogen Sequence Homology: Pig: 100%; Rat: 100%; Human: 100%; Mouse: 100%; Horse: 93%; Dog: 86%; Bovine: 86%



[View online »](#)

**Product images:**

WB Suggested Anti-PRR16 Antibody Titration: 0.2-1 ug/ml; ELISA Titer: 1:312500; Positive Control: Human Small Intestine