

Product datasheet for **TA345002**

SHC3 Rabbit Polyclonal Antibody

Product data:

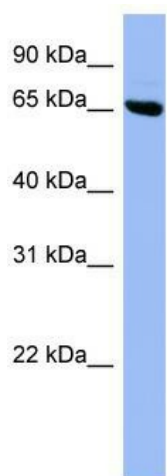
Product Type:	Primary Antibodies
Applications:	WB
Recommended Dilution:	WB
Reactivity:	Human
Host:	Rabbit
Isotype:	IgG
Clonality:	Polyclonal
Immunogen:	The immunogen for anti-SHC3 antibody: synthetic peptide directed towards the middle region of human SHC3. Synthetic peptide located within the following region: RLKPRPHAPDTAQFAGKEQTYQGRHLGDTFGEDWQQTPLRQGSSDIYST
Formulation:	Liquid. Purified antibody supplied in 1x PBS buffer with 0.09% (w/v) sodium azide and 2% sucrose. <i>Note that this product is shipped as lyophilized powder to China customers.</i>
Purification:	Affinity Purified
Conjugation:	Unconjugated
Storage:	Store at -20°C as received.
Stability:	Stable for 12 months from date of receipt.
Predicted Protein Size:	64 kDa
Gene Name:	SHC adaptor protein 3
Database Link:	NP_058544 Entrez Gene 53358 Human Q92529
Background:	SHC3 is a signaling adapter that couples activated growth factor receptors to signaling pathway in neurons. SHC3 is involved in the signal transduction pathways of neurotrophin-activated Trk receptors in cortical neurons.
Synonyms:	N-Shc; NSHC; RAI; SHCC
Note:	Immunogen Sequence Homology: Dog: 100%; Pig: 100%; Rat: 100%; Horse: 100%; Human: 100%; Mouse: 100%; Bovine: 100%; Rabbit: 100%; Guinea pig: 100%



[View online »](#)

Protein Pathways:

Chemokine signaling pathway, Chronic myeloid leukemia, ErbB signaling pathway, Focal adhesion, Glioma, Insulin signaling pathway, Natural killer cell mediated cytotoxicity, Neurotrophin signaling pathway

Product images:

WB Suggested Anti-SHC3 Antibody Titration: 0.2-1 ug/ml; ELISA Titer: 1:1562500; Positive Control: HepG2 cell lysate