

## Product datasheet for **TA345001**

### **MAGP1 (MFAP2) Rabbit Polyclonal Antibody**

#### **Product data:**

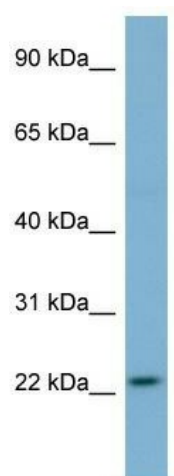
<b>Product Type:</b>	Primary Antibodies
<b>Applications:</b>	WB
<b>Recommended Dilution:</b>	WB
<b>Reactivity:</b>	Human
<b>Host:</b>	Rabbit
<b>Isotype:</b>	IgG
<b>Clonality:</b>	Polyclonal
<b>Immunogen:</b>	The immunogen for anti-MFAP2 antibody: synthetic peptide directed towards the N terminal of human MFAP2. Synthetic peptide located within the following region: MRAAYLFLFLPAGLLAQQGYDLDPFPDPDHVQYTHYSDQIDNPDYYDY
<b>Formulation:</b>	Liquid. Purified antibody supplied in 1x PBS buffer with 0.09% (w/v) sodium azide and 2% sucrose. <i>Note that this product is shipped as lyophilized powder to China customers.</i>
<b>Purification:</b>	Affinity Purified
<b>Conjugation:</b>	Unconjugated
<b>Storage:</b>	Store at -20°C as received.
<b>Stability:</b>	Stable for 12 months from date of receipt.
<b>Predicted Protein Size:</b>	19 kDa
<b>Gene Name:</b>	microfibrillar associated protein 2
<b>Database Link:</b>	<a href="#">NP_059453</a> <a href="#">Entrez Gene 4237 Human P55001</a>
<b>Background:</b>	Microfibrillar-associated protein 2 is a major antigen of elastin-associated microfibrils and a candidate for involvement in the etiology of inherited connective tissue diseases. Four transcript variants encoding two different isoforms have been found for
<b>Synonyms:</b>	MAGP; MAGP-1; MAGP1
<b>Note:</b>	Immunogen Sequence Homology: Dog: 100%; Pig: 100%; Rat: 100%; Horse: 100%; Human: 100%; Mouse: 100%; Bovine: 93%; Guinea pig: 92%



[View online »](#)

Protein Families: Secreted Protein

### Product images:



WB Suggested Anti-MFAP2 Antibody Titration:  
0.2-1 ug/ml; ELISA Titer: 1:1562500; Positive  
Control: Human Liver