

Product datasheet for **TA344999**

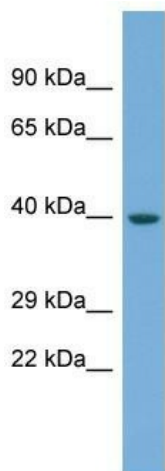
ENOSF1 Rabbit Polyclonal Antibody

Product data:

Product Type:	Primary Antibodies
Applications:	WB
Recommended Dilution:	WB
Reactivity:	Human
Host:	Rabbit
Isotype:	IgG
Clonality:	Polyclonal
Immunogen:	The immunogen for Anti-ENOSF1 antibody is: synthetic peptide directed towards the middle region of Human ENOSF1. Synthetic peptide located within the following region: LMMDANQRWDVPEAVEWMSKLAKFKPLWIEPTSPDDILGHATISKALVP
Formulation:	Liquid. Purified antibody supplied in 1x PBS buffer with 0.09% (w/v) sodium azide and 2% sucrose. <i>Note that this product is shipped as lyophilized powder to China customers.</i>
Purification:	Affinity Purified
Conjugation:	Unconjugated
Storage:	Store at -20°C as received.
Stability:	Stable for 12 months from date of receipt.
Predicted Protein Size:	40 kDa
Gene Name:	enolase superfamily member 1
Database Link:	NP_001119595 Entrez Gene 55556 Human Q7L5Y1
Background:	The function of this protein remains unknown.
Synonyms:	RTS; TYMSAS
Note:	Immunogen Sequence Homology: Dog: 100%; Pig: 100%; Rat: 100%; Horse: 100%; Human: 100%; Yeast: 100%; Bovine: 100%; Rabbit: 100%; Guinea pig: 100%



[View online »](#)

Product images:


Host: Rabbit
 Target Name: ENOSF1
 Sample Tissue: Fetal Muscle Lysate
 Antibody Dilution: 1.0 μ g/ml

Host: Rabbit; Target Name: ENOSF1; Sample
 Tissue: Fetal Muscle lysates; Antibody Dilution:
 1.0 ug/ml