

## Product datasheet for **TA344998**

### **RAB39 (RAB39A) Rabbit Polyclonal Antibody**

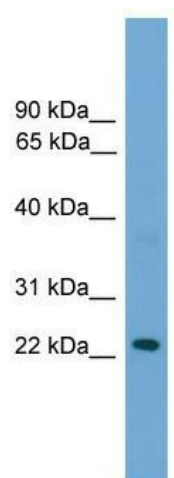
#### **Product data:**

Product Type:	Primary Antibodies
Applications:	WB
Recommended Dilution:	WB
Reactivity:	Human
Host:	Rabbit
Isotype:	IgG
Clonality:	Polyclonal
Immunogen:	The immunogen for anti-RAB39 antibody: synthetic peptide directed towards the N terminal of human RAB39. Synthetic peptide located within the following region: METIWIYQFRLIVIGDSTVVGKSCLLHRFTQGRFPGLRSPACDPTVGVDFE
Formulation:	Liquid. Purified antibody supplied in 1x PBS buffer with 0.09% (w/v) sodium azide and 2% sucrose. <i>Note that this product is shipped as lyophilized powder to China customers.</i>
Purification:	Affinity Purified
Conjugation:	Unconjugated
Storage:	Store at -20°C as received.
Stability:	Stable for 12 months from date of receipt.
Predicted Protein Size:	25 kDa
Gene Name:	RAB39A, member RAS oncogene family
Database Link:	<a href="#">NP_059986</a> <a href="#">Entrez Gene 54734 Human Q14964</a>
Background:	RAB39 may be involved in vesicular trafficking.
Synonyms:	RAB39
Note:	Immunogen Sequence Homology: Pig: 100%; Rat: 100%; Horse: 100%; Human: 100%; Mouse: 100%; Bovine: 100%; Rabbit: 100%; Guinea pig: 100%
Protein Families:	Druggable Genome



[View online »](#)

## Product images:



WB Suggested Anti-RAB39 Antibody Titration: 0.2-1 ug/ml; ELISA Titer: 1:312500; Positive Control: HeLa cell lysate