

Product datasheet for **TA344997**

UCHL5IP (HAUS7) Rabbit Polyclonal Antibody

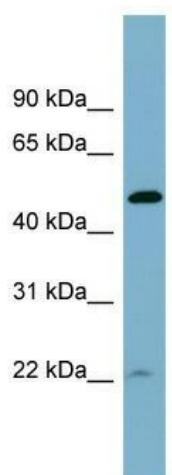
Product data:

Product Type:	Primary Antibodies
Applications:	WB
Recommended Dilution:	WB
Reactivity:	Human
Host:	Rabbit
Isotype:	IgG
Clonality:	Polyclonal
Immunogen:	The immunogen for anti-UCHL5IP antibody: synthetic peptide directed towards the middle region of human UCHL5IP. Synthetic peptide located within the following region: LLDTIRSLTIGCSSCSLMEHFEDTREKNEALLGELFSSPHLQMLLNPEC
Formulation:	Liquid. Purified antibody supplied in 1x PBS buffer with 0.09% (w/v) sodium azide and 2% sucrose.
Purification:	Affinity Purified
Conjugation:	Unconjugated
Storage:	Store at -20°C as received.
Stability:	Stable for 12 months from date of receipt.
Predicted Protein Size:	47 kDa
Gene Name:	HAUS augmin like complex subunit 7
Database Link:	NP_996990 Entrez Gene 55559 Human Q99871
Background:	This gene encodes a protein identified by interaction with ubiquitin C-terminal hydrolase 37, which functions to edit polyubiquitin chains on ubiquitinated substrates. This protein is a subunit of the multisubunit augmin complex, which regulates centrosom
Synonyms:	HSXQ28ORF; UCHL5IP; UIP1
Note:	Immunogen Sequence Homology: Dog: 100%; Human: 100%; Horse: 93%; Pig: 92%; Mouse: 92%; Bovine: 86%; Rabbit: 85%



[View online »](#)

Product images:



WB Suggested Anti-UCL5IP Antibody Titration:
0.2-1 ug/ml; ELISA Titer: 1:1562500; Positive
Control: Hela cell lysateHAUS7 is strongly
supported by BioGPS gene expression data to be
expressed in Human HeLa cells