

## Product datasheet for TA344994

### C2ORF29 (CNOT11) Rabbit Polyclonal Antibody

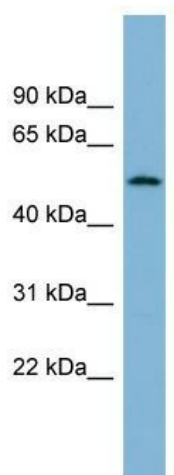
#### Product data:

|                         |   |
|-------------------------|---|
| Product Type:           | Primary Antibodies  |
| Applications:           | WB  |
| Recommended Dilution:   | WB  |
| Reactivity:             | Human   |
| Host:                   | Rabbit  |
| Isotype:                | IgG   |
| Clonality:              | Polyclonal  |
| Immunogen:              | The immunogen for anti-C2orf29 antibody: synthetic peptide directed towards the N terminal of human C2orf29. Synthetic peptide located within the following region:<br>NPFAASFAHLLNPAPPARGGQEPDRPPLSGFLPPITPPEKFFLSQLMLAP |
| Formulation:            | Liquid. Purified antibody supplied in 1x PBS buffer with 0.09% (w/v) sodium azide and 2% sucrose.   |
| Purification:           | Affinity Purified   |
| Conjugation:            | Unconjugated  |
| Storage:                | Store at -20°C as received.   |
| Stability:              | Stable for 12 months from date of receipt.  |
| Predicted Protein Size: | 55 kDa  |
| Gene Name:              | CCR4-NOT transcription complex subunit 11   |
| Database Link:          | <a href="#">NP_060016</a><br><a href="#">Entrez Gene 55571 Human</a><br><a href="#">Q9UKZ1</a>  |
| Background:             | The function of this protein remains unknown.   |
| Synonyms:               | C2orf29; C40  |
| Note:                   | Immunogen Sequence Homology: Dog: 100%; Pig: 100%; Rat: 100%; Human: 100%; Mouse: 100%; Bovine: 100%  |



[View online »](#)

## Product images:



WB Suggested Anti-C2orf29 Antibody Titration:  
0.2-1 ug/ml; ELISA Titer: 1:1562500; Positive  
Control: Human Thymus