

Product datasheet for **TA344993**

C2ORF29 (CNOT11) Rabbit Polyclonal Antibody

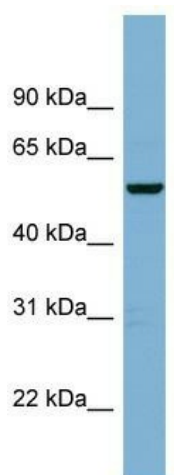
Product data:

Product Type:	Primary Antibodies
Applications:	WB
Recommended Dilution:	WB
Reactivity:	Human
Host:	Rabbit
Isotype:	IgG
Clonality:	Polyclonal
Immunogen:	The immunogen for anti-C2orf29 antibody: synthetic peptide directed towards the middle region of human C2orf29. Synthetic peptide located within the following region: SVDISGLQLALAERQSELPTQSKASFPSILSDPDPDSSNSGFDSSVASQI
Formulation:	Liquid. Purified antibody supplied in 1x PBS buffer with 0.09% (w/v) sodium azide and 2% sucrose.
Purification:	Affinity Purified
Conjugation:	Unconjugated
Storage:	Store at -20°C as received.
Stability:	Stable for 12 months from date of receipt.
Predicted Protein Size:	55 kDa
Gene Name:	CCR4-NOT transcription complex subunit 11
Database Link:	NP_060016 Entrez Gene 55571 Human Q9UKZ1
Background:	The function of this protein remains unknown.
Synonyms:	C2orf29; C40
Note:	Immunogen Sequence Homology: Dog: 100%; Pig: 100%; Rat: 100%; Horse: 100%; Human: 100%; Mouse: 100%; Bovine: 100%; Rabbit: 100%; Zebrafish: 100%; Guinea pig: 100%



[View online »](#)

Product images:



WB Suggested Anti-C2orf29 Antibody Titration:
0.2-1 ug/ml; ELISA Titer: 1:1562500; Positive
Control: MCF7 cell lysate