

Product datasheet for **TA344989**

KLHDC4 Rabbit Polyclonal Antibody

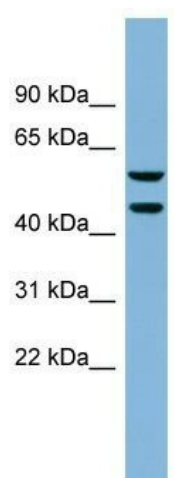
Product data:

Product Type:	Primary Antibodies
Applications:	WB
Recommended Dilution:	WB
Reactivity:	Human
Host:	Rabbit
Isotype:	IgG
Clonality:	Polyclonal
Immunogen:	The immunogen for anti-KLHDC4 antibody: synthetic peptide directed towards the N terminal of human KLHDC4. Synthetic peptide located within the following region: MGKKGKKEKKGRGAEKTAAKMEKKVSKRSRKEEEDLEALIAHFQTLDAKR
Formulation:	Liquid. Purified antibody supplied in 1x PBS buffer with 0.09% (w/v) sodium azide and 2% sucrose. <i>Note that this product is shipped as lyophilized powder to China customers.</i>
Purification:	Affinity Purified
Conjugation:	Unconjugated
Storage:	Store at -20°C as received.
Stability:	Stable for 12 months from date of receipt.
Predicted Protein Size:	58 kDa
Gene Name:	kelch domain containing 4
Database Link:	NP_060036 Entrez Gene 54758 Human Q8TBB5
Background:	The function of this protein remains unknown.
Synonyms:	DKFZp434G0522; FLJ00104
Note:	Immunogen Sequence Homology: Dog: 100%; Rat: 100%; Horse: 100%; Human: 100%; Mouse: 100%; Bovine: 100%; Rabbit: 100%; Pig: 93%; Guinea pig: 93%; Zebrafish: 86%



[View online »](#)

Product images:



WB Suggested Anti-KLHDC4 Antibody Titration:
0.2-1 ug/ml; ELISA Titer: 1:1562500; Positive
Control: Human Placenta