

## Product datasheet for **TA344987**

### BTG4 Rabbit Polyclonal Antibody

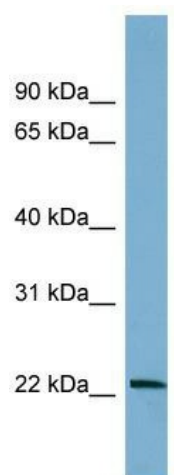
#### Product data:

Product Type:	Primary Antibodies
Applications:	WB
Recommended Dilution:	WB
Reactivity:	Human
Host:	Rabbit
Isotype:	IgG
Clonality:	Polyclonal
Immunogen:	The immunogen for anti-BTG4 antibody: synthetic peptide directed towards the middle region of human BTG4. Synthetic peptide located within the following region: ILERACVESNVDFSHLGLPKEMTIWVDPFEVCCRYGKKNHPFTVASFKGR
Formulation:	Liquid. Purified antibody supplied in 1x PBS buffer with 0.09% (w/v) sodium azide and 2% sucrose. <i>Note that this product is shipped as lyophilized powder to China customers.</i>
Purification:	Affinity Purified
Conjugation:	Unconjugated
Storage:	Store at -20°C as received.
Stability:	Stable for 12 months from date of receipt.
Predicted Protein Size:	26 kDa
Gene Name:	BTG family member 4
Database Link:	<a href="#">NP_060059</a> <a href="#">Entrez Gene 54766 Human</a> <a href="#">Q9NY30</a>
Background:	The protein encoded by this gene is a member of the BTG/Tob family. This family has structurally related proteins that appear to have antiproliferative properties. This encoded protein can induce G1 arrest in the cell cycle.
Synonyms:	PC3B
Note:	Immunogen Sequence Homology: Dog: 100%; Pig: 100%; Horse: 100%; Human: 100%; Rabbit: 100%; Bovine: 93%; Rat: 86%; Mouse: 86%



[View online »](#)

## Product images:



WB Suggested Anti-BTG4 Antibody Titration: 0.2-1 ug/ml; Positive Control: Human brain