

Product datasheet for **TA344986**

ZCCHC8 Rabbit Polyclonal Antibody

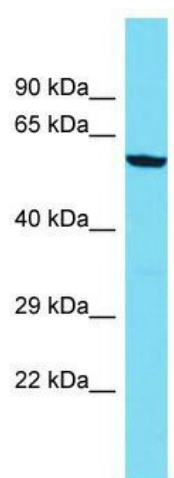
Product data:

Product Type:	Primary Antibodies
Applications:	WB
Recommended Dilution:	WB
Reactivity:	Rat
Host:	Rabbit
Isotype:	IgG
Clonality:	Polyclonal
Immunogen:	The immunogen for Anti-Zcchc8 antibody is: synthetic peptide directed towards the C-terminal region of Rat Zcchc8. Synthetic peptide located within the following region: FQPPLPPGTPPPLPQGTPPPLFTPPLPKGTPPLTPSDSPQPRPTASGVDE
Formulation:	Liquid. Purified antibody supplied in 1x PBS buffer with 0.09% (w/v) sodium azide and 2% sucrose. <i>Note that this product is shipped as lyophilized powder to China customers.</i>
Purification:	Affinity Purified
Conjugation:	Unconjugated
Storage:	Store at -20°C as received.
Stability:	Stable for 12 months from date of receipt.
Predicted Protein Size:	52 kDa
Gene Name:	zinc finger CCHC-type containing 8
Database Link:	NP_060082 Entrez Gene 288661 Rat Q6NZY4
Background:	The function of this protein remains unknown.
Synonyms:	DKFZp434E2220
Note:	Immunogen Sequence Homology: Dog: 100%; Pig: 100%; Rat: 100%; Horse: 100%; Human: 100%; Mouse: 100%; Bovine: 100%; Rabbit: 93%; Guinea pig: 93%



[View online »](#)

Product images:



Host: Rabbit; Target Name: Zcchc8; Sample
Tissue: Rat Thymus lysates; Antibody Dilution: 1.0
ug/ml