

Product datasheet for **TA344983**

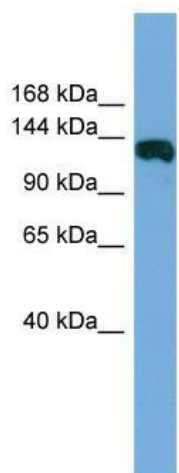
FAM29A (HAUS6) Rabbit Polyclonal Antibody

Product data:

Product Type:	Primary Antibodies
Applications:	WB
Recommended Dilution:	WB
Reactivity:	Human
Host:	Rabbit
Isotype:	IgG
Clonality:	Polyclonal
Immunogen:	The immunogen for anti-FAM29A antibody: synthetic peptide directed towards the middle region of human FAM29A. Synthetic peptide located within the following region: DFNLQALRSRYEALKKSLSKKREESYLSNSQTPERHKPELSPTPQNVQTD
Formulation:	Liquid. Purified antibody supplied in 1x PBS buffer with 0.09% (w/v) sodium azide and 2% sucrose.
Purification:	Affinity Purified
Conjugation:	Unconjugated
Storage:	Store at -20°C as received.
Stability:	Stable for 12 months from date of receipt.
Predicted Protein Size:	108 kDa
Gene Name:	HAUS augmin like complex subunit 6
Database Link:	NP_060115 Entrez Gene 54801 Human Q7Z4H7
Background:	HAUS6 is 1 of 8 subunits of the 390-kD human augmin complex, or HAUS complex. The augmin complex was first identified in Drosophila, and its name comes from the Latin verb 'augmentare,' meaning 'to increase.' The augmin complex is a microtubule-binding complex involved in microtubule generation within the mitotic spindle and is vital to mitotic spindle assembly (Goshima et al., 2008 [PubMed 18443220]; Uehara et al., 2009 [PubMed 19369198]).
Synonyms:	Dgt6; FAM29A
Note:	Immunogen Sequence Homology: Human: 100%


[View online »](#)

Product images:



WB Suggested Anti-FAM29A Antibody Titration:
0.2-1 ug/ml; ELISA Titer: 1:312500; Positive
Control: Human Muscle