

Product datasheet for **TA344981**

AHI1 Rabbit Polyclonal Antibody

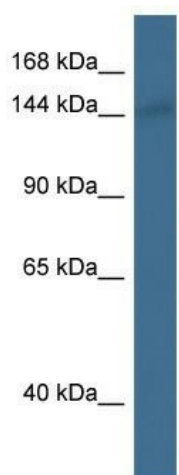
Product data:

Product Type:	Primary Antibodies
Applications:	WB
Recommended Dilution:	WB
Reactivity:	Rat
Host:	Rabbit
Isotype:	IgG
Clonality:	Polyclonal
Immunogen:	The immunogen for anti-Ahi1 antibody: synthetic peptide corresponding to a region of Rat. Synthetic peptide located within the following region: KDSTLRIMDLRILAARKFVGAANYREKIHSTLTPCGTLLFSGSEDGIVYV
Formulation:	Liquid. Purified antibody supplied in 1x PBS buffer with 0.09% (w/v) sodium azide and 2% sucrose.
Purification:	Affinity Purified
Conjugation:	Unconjugated
Storage:	Store at -20°C as received.
Stability:	Stable for 12 months from date of receipt.
Predicted Protein Size:	120 kDa
Gene Name:	Abelson helper integration site 1
Database Link:	NP_001128303 Entrez Gene 308923 Rat Q8N157
Background:	Mutations in the human homolog are associated with Joubert syndrome, an autosomal recessive disorder resulting in severe mental retardation.
Synonyms:	AHI-1; dj71N10.1; JBTS3; ORF1
Note:	Immunogen Sequence Homology: Dog: 100%; Pig: 100%; Rat: 100%; Horse: 100%; Human: 100%; Mouse: 100%; Bovine: 100%; Rabbit: 100%; Guinea pig: 100%



[View online »](#)

Product images:



WB Suggested Anti-Ahi1 Antibody; Titration: 1.0 ug/ml; Positive Control: Rat Lung