

## Product datasheet for **TA344980**

### ERCC6L Rabbit Polyclonal Antibody

#### Product data:

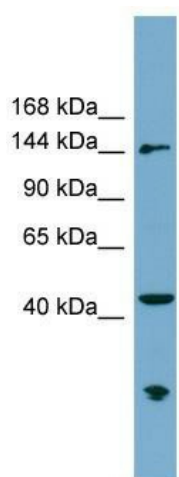
Product Type:	Primary Antibodies
Applications:	WB
Recommended Dilution:	WB
Reactivity:	Human
Host:	Rabbit
Isotype:	IgG
Clonality:	Polyclonal
Immunogen:	The immunogen for anti-ERCC6L antibody: synthetic peptide directed towards the N terminal of human ERCC6L. Synthetic peptide located within the following region: GDLEEAFKLFNLAKDIFPNEKVLRSRIQKIQEALAEQGDDEFTDVCNS
Formulation:	Liquid. Purified antibody supplied in 1x PBS buffer with 0.09% (w/v) sodium azide and 2% sucrose. <i>Note that this product is shipped as lyophilized powder to China customers.</i>
Purification:	Affinity Purified
Conjugation:	Unconjugated
Storage:	Store at -20°C as received.
Stability:	Stable for 12 months from date of receipt.
Predicted Protein Size:	141 kDa
Gene Name:	ERCC excision repair 6 like, spindle assembly checkpoint helicase
Database Link:	<a href="#">NP_060139</a> <a href="#">Entrez Gene 54821 Human</a> <a href="#">Q2NWX8</a>
Background:	ERCC6L is a DNA helicase that acts as an essential component of the spindle assembly checkpoint. ERCC6L contributes to the mitotic checkpoint by recruiting MAD2 to kinetochores and monitoring tension on centromeric chromatin. ERCC6L acts as a tension sensor that associates with catenated DNA which is stretched under tension until it is resolved during anaphase.
Synonyms:	PICH; RAD26L



[View online »](#)

**Note:** Immunogen Sequence Homology: Human: 100%; Dog: 93%; Bovine: 93%; Rabbit: 93%; Pig: 86%; Horse: 86%; Rat: 79%

### Product images:



WB Suggested Anti-ERCC6L Antibody Titration:  
0.2-1 ug/ml; Positive Control: THP-1 cell lysate