

## Product datasheet for **TA344976**

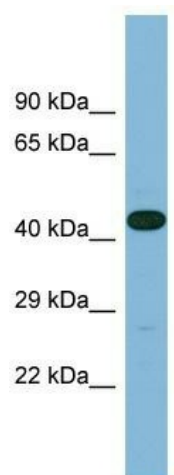
### LRRC49 Rabbit Polyclonal Antibody

#### Product data:

|                         |   |
|-------------------------|---|
| Product Type:           | Primary Antibodies  |
| Applications:           | WB  |
| Recommended Dilution:   | WB  |
| Reactivity:             | Human   |
| Host:                   | Rabbit  |
| Isotype:                | IgG   |
| Clonality:              | Polyclonal  |
| Immunogen:              | The immunogen for Anti-LRRC49 antibody is: synthetic peptide directed towards the C-terminal region of Human LRRC49. Synthetic peptide located within the following region: YRLISILGDARKKQFRYLLESKGGKPGIINEENNSKRLVGENTNRATLN |
| Formulation:            | Liquid. Purified antibody supplied in 1x PBS buffer with 0.09% (w/v) sodium azide and 2% sucrose.<br><i>Note that this product is shipped as lyophilized powder to China customers.</i>                                       |
| Purification:           | Affinity Purified   |
| Conjugation:            | Unconjugated  |
| Storage:                | Store at -20°C as received.   |
| Stability:              | Stable for 12 months from date of receipt.  |
| Predicted Protein Size: | 43 kDa  |
| Gene Name:              | leucine rich repeat containing 49   |
| Database Link:          | <a href="#">NP_060161</a><br><a href="#">Entrez Gene 54839 Human</a><br><a href="#">Q8IUZ0</a>  |
| Background:             | The function of this protein remains unknown.   |
| Synonyms:               | PGs4  |
| Note:                   | Immunogen Sequence Homology: Human: 100%; Mouse: 100%; Dog: 93%; Pig: 93%; Horse: 93%; Bovine: 93%; Rabbit: 93%; Guinea pig: 93%; Rat: 86%  |



[View online »](#)

**Product images:**

Host: Rabbit; Target Name: LRRC49; Sample  
Tissue: Fetal Heart lysates; Antibody Dilution: 1.0  
ug/ml