

Product datasheet for **TA344974**

BIVM Rabbit Polyclonal Antibody

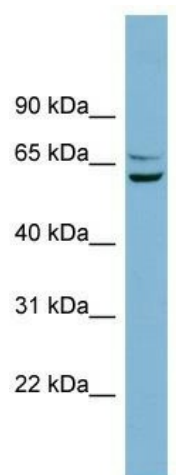
Product data:

Product Type:	Primary Antibodies
Applications:	WB
Recommended Dilution:	WB
Reactivity:	Human
Host:	Rabbit
Isotype:	IgG
Clonality:	Polyclonal
Immunogen:	The immunogen for anti-BIVM antibody: synthetic peptide directed towards the middle region of human BIVM. Synthetic peptide located within the following region: PFGTIRQESQPPTHAQGIKSESEDNISKKQHGRLLGRSFSASFHQDSAWK
Formulation:	Liquid. Purified antibody supplied in 1x PBS buffer with 0.09% (w/v) sodium azide and 2% sucrose. <i>Note that this product is shipped as lyophilized powder to China customers.</i>
Purification:	Affinity Purified
Conjugation:	Unconjugated
Storage:	Store at -20°C as received.
Stability:	Stable for 12 months from date of receipt.
Predicted Protein Size:	57 kDa
Gene Name:	basic, immunoglobulin-like variable motif containing
Database Link:	NP_060163 Entrez Gene 54841 Human Q86UB2
Background:	The function of this protein remains unknown.
Synonyms:	FLJ44301; FLJ44556; MGC133326
Note:	Immunogen Sequence Homology: Dog: 100%; Pig: 100%; Horse: 100%; Human: 100%; Mouse: 100%; Bovine: 100%; Rabbit: 100%; Guinea pig: 100%; Rat: 93%



[View online »](#)

Product images:



WB Suggested Anti-BIVM Antibody Titration: 0.2-1 ug/ml; Positive Control: 293T cell lysate