

Product datasheet for **TA344973**

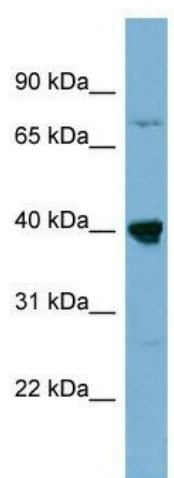
WDR55 Rabbit Polyclonal Antibody

Product data:

Product Type:	Primary Antibodies
Applications:	WB
Recommended Dilution:	WB
Reactivity:	Human
Host:	Rabbit
Isotype:	IgG
Clonality:	Polyclonal
Immunogen:	The immunogen for anti-WDR55 antibody: synthetic peptide directed towards the middle region of human WDR55. Synthetic peptide located within the following region: AKKLLLTASGDGCLGIFNIKRRRFELLSEPGDLTSVTLMKWGKVVACG
Formulation:	Liquid. Purified antibody supplied in 1x PBS buffer with 0.09% (w/v) sodium azide and 2% sucrose. <i>Note that this product is shipped as lyophilized powder to China customers.</i>
Purification:	Affinity Purified
Conjugation:	Unconjugated
Storage:	Store at -20°C as received.
Stability:	Stable for 12 months from date of receipt.
Predicted Protein Size:	42 kDa
Gene Name:	WD repeat domain 55
Database Link:	NP_060176 Entrez Gene 54853 Human Q9H6Y2
Background:	WDR55 is a nucleolar protein that acts as a modulator of rRNA synthesis. WDR55 plays a central role during organogenesis.
Synonyms:	FLJ20195; FLJ21702
Note:	Immunogen Sequence Homology: Dog: 100%; Pig: 100%; Rat: 100%; Horse: 100%; Human: 100%; Mouse: 100%; Bovine: 100%; Rabbit: 100%; Guinea pig: 100%; Zebrafish: 86%



[View online »](#)

Product images:

WB Suggested Anti-WDR55 Antibody Titration:
0.2-1 ug/ml; ELISA Titer: 1:1562500; Positive
Control: Jurkat cell lysate WDR55 is supported by
BioGPS gene expression data to be expressed in
Jurkat