

Product datasheet for **TA344971**

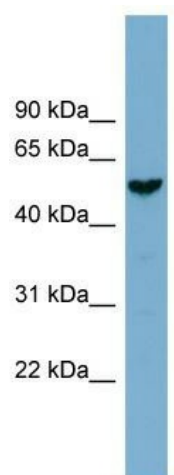
FAM83E Rabbit Polyclonal Antibody

Product data:

Product Type:	Primary Antibodies
Applications:	WB
Recommended Dilution:	WB
Reactivity:	Human
Host:	Rabbit
Isotype:	IgG
Clonality:	Polyclonal
Immunogen:	The immunogen for anti-FAM83E antibody: synthetic peptide directed towards the middle region of human FAM83E. Synthetic peptide located within the following region: RARTPSGPPARPSRSMWDLRSLSQLSGSSDGDNELKKSWSKDTPAKALM
Formulation:	Liquid. Purified antibody supplied in 1x PBS buffer with 0.09% (w/v) sodium azide and 2% sucrose.
Purification:	Affinity Purified
Conjugation:	Unconjugated
Storage:	Store at -20°C as received.
Stability:	Stable for 12 months from date of receipt.
Predicted Protein Size:	52 kDa
Gene Name:	family with sequence similarity 83 member E
Database Link:	NP_060178 Entrez Gene 54854 Human Q2M2I3
Background:	The function of this protein remains unknown.
Synonyms:	FLJ20200; MGC138175; MGC138177
Note:	Immunogen Sequence Homology: Pig: 100%; Human: 100%; Bovine: 93%; Dog: 92%; Rat: 86%; Mouse: 86%; Guinea pig: 86%



[View online »](#)

Product images:

WB Suggested Anti-FAM83E Antibody Titration: 0.2-1 ug/ml; Positive Control: NCI-H226 cell lysate FAM83E is supported by BioGPS gene expression data to be expressed in NCIH226