

## Product datasheet for **TA344969**

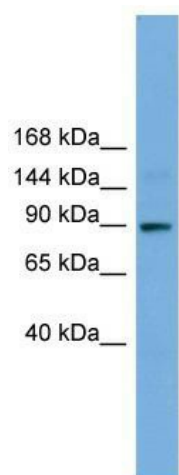
### TTC27 Rabbit Polyclonal Antibody

#### Product data:

Product Type:	Primary Antibodies
Applications:	WB
Recommended Dilution:	WB
Reactivity:	Human
Host:	Rabbit
Isotype:	IgG
Clonality:	Polyclonal
Immunogen:	The immunogen for anti-TTC27 antibody: synthetic peptide directed towards the N terminal of human TTC27. Synthetic peptide located within the following region: KDQLDIAKDISQLQIDLTGALGKRTRFQENYVAQLILDVRREGDVL SNCE
Formulation:	Liquid. Purified antibody supplied in 1x PBS buffer with 0.09% (w/v) sodium azide and 2% sucrose.
Purification:	Affinity Purified
Conjugation:	Unconjugated
Storage:	Store at -20°C as received.
Stability:	Stable for 12 months from date of receipt.
Predicted Protein Size:	97 kDa
Gene Name:	tetratricopeptide repeat domain 27
Database Link:	<a href="#">NP_060205</a> <a href="#">Entrez Gene 55622 Human</a> <a href="#">Q6P3X3</a>
Background:	The function of TTC27 remains unknown.
Synonyms:	FLJ20272
Note:	Immunogen Sequence Homology: Pig: 100%; Rat: 100%; Horse: 100%; Human: 100%; Mouse: 100%; Bovine: 100%; Rabbit: 100%; Guinea pig: 100%; Zebrafish: 93%; Dog: 92%; Yeast: 83%


[View online »](#)

## Product images:



WB Suggested Anti-TTC27 Antibody Titration: 0.2-1 ug/ml; ELISA Titer: 1:1562500; Positive Control: Human Muscle