

Product datasheet for TA344967

PNRC2 Rabbit Polyclonal Antibody

Product data:

Product Type:	Primary Antibodies
Applications:	WB
Recommended Dilution:	WB
Reactivity:	Human
Host:	Rabbit
Isotype:	IgG
Clonality:	Polyclonal
Immunogen:	The immunogen for anti-PNRC2 antibody: synthetic peptide directed towards the middle region of human PNRC2. Synthetic peptide located within the following region: NQSWNSSLSGPRLLFKSQANQNYAGAKFSEPPSPSVLPKPPSHWVPVSN
Formulation:	Liquid. Purified antibody supplied in 1x PBS buffer with 0.09% (w/v) sodium azide and 2% sucrose. <i>Note that this product is shipped as lyophilized powder to China customers.</i>
Purification:	Affinity Purified
Conjugation:	Unconjugated
Storage:	Store at -20°C as received.
Stability:	Stable for 12 months from date of receipt.
Predicted Protein Size:	15 kDa
Gene Name:	proline rich nuclear receptor coactivator 2
Database Link:	NP_060231 Entrez Gene 55629 Human Q9NPJ4
Background:	PNRC2 is involved in nonsense-mediated mRNA decay (NMD) by acting as a bridge between the mRNA decapping complex and the NMD machinery. PNRC2 may act by targeting the NMD machinery to the P-body and recruiting the decapping machinery to aberrant mRNAs. PNRC2 is required for UPF1/RENT1 localization to the P-body. PNRC2 also acts as a nuclear receptor coactivator. PNRC2 may play a role in controlling the energy balance between energy storage and energy expenditure.



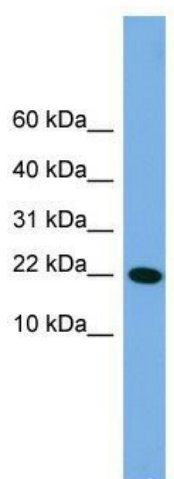
[View online »](#)

Synonyms: FLJ20312; MGC99541

Note: Immunogen Sequence Homology: Pig: 100%; Human: 100%; Rabbit: 100%; Zebrafish: 100%; Guinea pig: 100%; Dog: 93%; Rat: 93%; Horse: 93%; Mouse: 93%; Bovine: 93%

Protein Families: Druggable Genome, Transcription Factors

Product images:



WB Suggested Anti-PNRC2 Antibody Titration:
0.2-1 ug/ml; ELISA Titer: 1:1562500; Positive
Control: Hela cell lysate