

Product datasheet for **TA344966**

YTHDF1 Rabbit Polyclonal Antibody

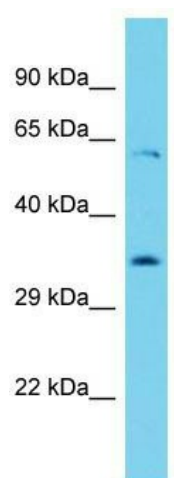
Product data:

Product Type:	Primary Antibodies
Applications:	WB
Recommended Dilution:	WB
Reactivity:	Rat
Host:	Rabbit
Isotype:	IgG
Clonality:	Polyclonal
Immunogen:	The immunogen for Anti-Ythdf1 antibody is: synthetic peptide directed towards the N-terminal region of Rat Ythdf1. Synthetic peptide located within the following region: PAFSAWGTSGSQGQQTQSSAYGSSYTYPPSSLGGTVVDGQTGFHSDTLNK
Formulation:	Liquid. Purified antibody supplied in 1x PBS buffer with 0.09% (w/v) sodium azide and 2% sucrose. <i>Note that this product is shipped as lyophilized powder to China customers.</i>
Purification:	Affinity Purified
Conjugation:	Unconjugated
Storage:	Store at -20°C as received.
Stability:	Stable for 12 months from date of receipt.
Predicted Protein Size:	61 kDa
Gene Name:	YTH N6-methyladenosine RNA binding protein 1
Database Link:	NP_060268 Entrez Gene 296467 Rat Q9BYJ9
Background:	The function of this protein remains unknown.
Synonyms:	C20orf21
Note:	Immunogen Sequence Homology: Pig: 100%; Rat: 100%; Human: 100%; Mouse: 100%; Rabbit: 100%; Guinea pig: 100%; Dog: 93%; Horse: 93%; Zebrafish: 93%; Bovine: 86%



[View online »](#)

Product images:



Host: Rabbit; Target Name: Ythdf1; Sample
Tissue: Rat Thymus lysates; Antibody Dilution: 1.0
ug/ml