

## Product datasheet for **TA344965**

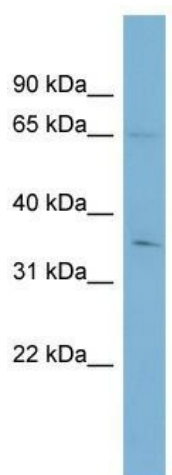
### YTHDF1 Rabbit Polyclonal Antibody

#### Product data:

Product Type:	Primary Antibodies
Applications:	WB
Recommended Dilution:	WB
Reactivity:	Human
Host:	Rabbit
Isotype:	IgG
Clonality:	Polyclonal
Immunogen:	The immunogen for anti-YTHDF1 antibody: synthetic peptide directed towards the middle region of human YTHDF1. Synthetic peptide located within the following region: QQAPSPQAAPQPQVAQPLPAQPPALAQPQYQSPQPPQTRWVAPRNRNA
Formulation:	Liquid. Purified antibody supplied in 1x PBS buffer with 0.09% (w/v) sodium azide and 2% sucrose. <i>Note that this product is shipped as lyophilized powder to China customers.</i>
Purification:	Affinity Purified
Conjugation:	Unconjugated
Storage:	Store at -20°C as received.
Stability:	Stable for 12 months from date of receipt.
Predicted Protein Size:	61 kDa
Gene Name:	YTH N6-methyladenosine RNA binding protein 1
Database Link:	<a href="#">NP_060268</a> <a href="#">Entrez Gene 54915 Human</a> <a href="#">Q9BYJ9</a>
Background:	The function of this protein remains unknown.
Synonyms:	C20orf21
Note:	Immunogen Sequence Homology: Pig: 100%; Rat: 100%; Horse: 100%; Human: 100%; Guinea pig: 100%; Dog: 93%; Mouse: 86%; Rabbit: 85%; Yeast: 83%



[View online »](#)

**Product images:**

WB Suggested Anti-YTHDF1 Antibody Titration:  
0.2-1 ug/ml; Positive Control: HepG2 cell  
lysate YTHDF1 is supported by BioGPS gene  
expression data to be expressed in HepG2