

## Product datasheet for **TA344964**

### OSGEP Rabbit Polyclonal Antibody

#### Product data:

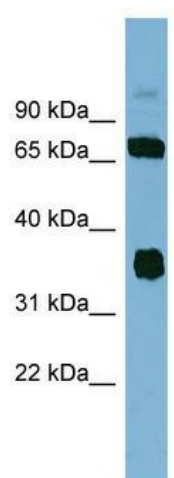
Product Type:	Primary Antibodies
Applications:	WB
Recommended Dilution:	WB
Reactivity:	Human
Host:	Rabbit
Isotype:	IgG
Clonality:	Polyclonal
Immunogen:	The immunogen for anti-OSGEP antibody: synthetic peptide directed towards the N terminal of human OSGEP. Synthetic peptide located within the following region: PPGTGFLPGDTARHHRAVILDLLQEALTESGLTSQDIDCIAYTKGPGMGA
Formulation:	Liquid. Purified antibody supplied in 1x PBS buffer with 0.09% (w/v) sodium azide and 2% sucrose. <i>Note that this product is shipped as lyophilized powder to China customers.</i>
Purification:	Affinity Purified
Conjugation:	Unconjugated
Storage:	Store at -20°C as received.
Stability:	Stable for 12 months from date of receipt.
Predicted Protein Size:	36 kDa
Gene Name:	O-sialoglycoprotein endopeptidase
Database Link:	<a href="#">NP_060277</a> <a href="#">Entrez Gene 55644 Human</a> <a href="#">Q9NPF4</a>
Background:	O-sialoglycoprotein endopeptidases specifically cleave the polypeptide backbone of membrane glycoproteins that contain clusters of O-linked sialoglycans.
Synonyms:	GCPL1; KAE1; OSGEP1; PRSMG1
Note:	Immunogen Sequence Homology: Dog: 100%; Pig: 100%; Rat: 100%; Horse: 100%; Human: 100%; Mouse: 100%; Bovine: 100%; Rabbit: 100%; Goat: 93%; Guinea pig: 93%; Yeast: 92%; Zebrafish: 79%



[View online »](#)

Protein Families: Druggable Genome, Protease

### Product images:



WB Suggested Anti-OSGEP Antibody Titration:  
0.2-1 ug/ml; ELISA Titer: 1:312500; Positive  
Control: MCF7 cell lysate