

## Product datasheet for **TA344962**

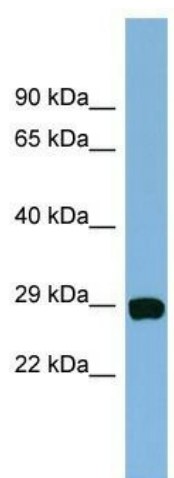
### CHCHD3 Rabbit Polyclonal Antibody

#### Product data:

Product Type:	Primary Antibodies
Applications:	WB
Recommended Dilution:	WB
Reactivity:	Human
Host:	Rabbit
Isotype:	IgG
Clonality:	Polyclonal
Immunogen:	The immunogen for anti-CHCHD3 antibody: synthetic peptide directed towards the N terminal of human CHCHD3. Synthetic peptide located within the following region: RMKESSPSGSKSQRYSGAYGASVSDEELKRRVAEELALEQAKKESEDQKR
Formulation:	Liquid. Purified antibody supplied in 1x PBS buffer with 0.09% (w/v) sodium azide and 2% sucrose. <i>Note that this product is shipped as lyophilized powder to China customers.</i>
Purification:	Affinity Purified
Conjugation:	Unconjugated
Storage:	Store at -20°C as received.
Stability:	Stable for 12 months from date of receipt.
Predicted Protein Size:	26 kDa
Gene Name:	coiled-coil-helix-coiled-coil-helix domain containing 3
Database Link:	<a href="#">NP_060282</a> <a href="#">Entrez Gene 54927 Human</a> <a href="#">Q9NX63</a>
Background:	The function of this protein remains unknown.
Synonyms:	MINOS3; PPP1R22
Note:	Immunogen Sequence Homology: Pig: 100%; Rat: 100%; Human: 100%; Mouse: 100%; Guinea pig: 100%; Dog: 86%; Horse: 86%; Sheep: 86%; Bovine: 86%; Rabbit: 86%



[View online »](#)

**Product images:**

WB Suggested Anti-CHCHD3 Antibody Titration:  
0.2-1 ug/ml; Positive Control: HeLa cell lysate