

Product datasheet for **TA344960**

LYAR Rabbit Polyclonal Antibody

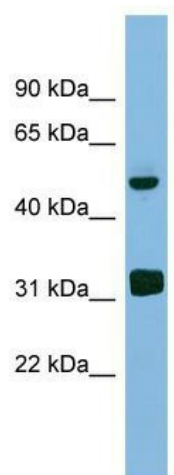
Product data:

Product Type:	Primary Antibodies
Applications:	WB
Recommended Dilution:	WB
Reactivity:	Human
Host:	Rabbit
Isotype:	IgG
Clonality:	Polyclonal
Immunogen:	The immunogen for anti-LYAR antibody: synthetic peptide directed towards the middle region of human LYAR. Synthetic peptide located within the following region: EQQGEVKKNKRERKEERQKKRKREKELKLENHQENSRNQPKKRKKGQE
Formulation:	Liquid. Purified antibody supplied in 1x PBS buffer with 0.09% (w/v) sodium azide and 2% sucrose. <i>Note that this product is shipped as lyophilized powder to China customers.</i>
Purification:	Affinity Purified
Conjugation:	Unconjugated
Storage:	Store at -20°C as received.
Stability:	Stable for 12 months from date of receipt.
Predicted Protein Size:	44 kDa
Gene Name:	Ly1 antibody reactive
Database Link:	NP_060286 Entrez Gene 55646 Human Q9NX58
Background:	The function of this protein remains unknown.
Synonyms:	ZC2HC2; ZLYAR
Note:	Immunogen Sequence Homology: Dog: 100%; Pig: 100%; Rat: 100%; Human: 100%; Mouse: 100%; Horse: 92%; Bovine: 85%



[View online »](#)

Product images:



WB Suggested Anti-LYAR Antibody Titration: 0.2-1 ug/ml; Positive Control: Human heart