

Product datasheet for **TA344959**

COMMD8 Rabbit Polyclonal Antibody

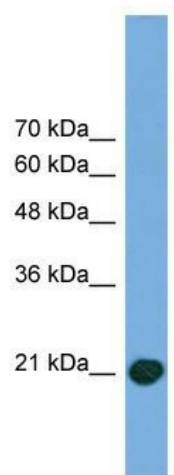
Product data:

Product Type:	Primary Antibodies
Applications:	WB
Recommended Dilution:	WB
Reactivity:	Human
Host:	Rabbit
Isotype:	IgG
Clonality:	Polyclonal
Immunogen:	The immunogen for anti-COMMD8 antibody: synthetic peptide directed towards the middle region of human COMMD8. Synthetic peptide located within the following region: IAALRMPLLSLHLDVKEVGPYSIEMSREELQNLIQSLEAANKVVLQL
Formulation:	Liquid. Purified antibody supplied in 1x PBS buffer with 0.09% (w/v) sodium azide and 2% sucrose. <i>Note that this product is shipped as lyophilized powder to China customers.</i>
Purification:	Affinity Purified
Conjugation:	Unconjugated
Storage:	Store at -20°C as received.
Stability:	Stable for 12 months from date of receipt.
Predicted Protein Size:	21 kDa
Gene Name:	COMM domain containing 8
Database Link:	NP_060315 Entrez Gene 54951 Human Q9NX08
Background:	The function of COMMD8 remains unknown.
Synonyms:	FLJ20502
Note:	Immunogen Sequence Homology: Human: 100%; Pig: 92%; Horse: 92%; Guinea pig: 92%; Dog: 86%; Rat: 86%; Rabbit: 86%; Yeast: 83%; Mouse: 79%; Bovine: 79%



[View online »](#)

Product images:



WB Suggested Anti-COMMD8 Antibody Titration:
0.2-1 ug/ml; Positive Control: Transfected 293T