

Product datasheet for **TA344955**

PINX1 Rabbit Polyclonal Antibody

Product data:

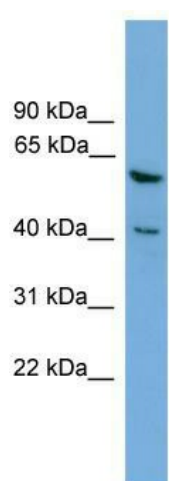
Product Type:	Primary Antibodies
Applications:	WB
Recommended Dilution:	WB
Reactivity:	Human
Host:	Rabbit
Isotype:	IgG
Clonality:	Polyclonal
Immunogen:	The immunogen for anti-PINX1 antibody: synthetic peptide directed towards the middle region of human PINX1. Synthetic peptide located within the following region: EKKSFSLEEKSKISKNRVHYMKFTKGGDLSSRSKTDLDCIFGKRQSKKTP
Formulation:	Liquid. Purified antibody supplied in 1x PBS buffer with 0.09% (w/v) sodium azide and 2% sucrose. <i>Note that this product is shipped as lyophilized powder to China customers.</i>
Purification:	Affinity Purified
Conjugation:	Unconjugated
Storage:	Store at -20°C as received.
Stability:	Stable for 12 months from date of receipt.
Predicted Protein Size:	37 kDa
Gene Name:	PIN2/TERF1 interacting, telomerase inhibitor 1
Database Link:	NP_060354 Entrez Gene 54984 Human Q96BK5
Background:	PINX1 is a microtubule-binding protein essential for faithful chromosome segregation. PINX1 mediates TRF1 and TERT accumulation in nucleolus and enhances TRF1 binding to telomeres. PINX1 inhibits telomerase activity and may inhibit cell proliferation and act as tumor suppressor.
Synonyms:	LPTL; LPTS



[View online »](#)

Note: Immunogen Sequence Homology: Dog: 100%; Pig: 100%; Rat: 100%; Horse: 100%; Human: 100%; Mouse: 100%; Bovine: 100%; Rabbit: 100%; Guinea pig: 92%; Zebrafish: 86%

Product images:



WB Suggested Anti-PINX1 Antibody Titration: 0.2-1 ug/ml; ELISA Titer: 1:312500; Positive Control: HepG2 cell lysate