

Product datasheet for **TA344953**

TESC Rabbit Polyclonal Antibody

Product data:

Product Type:	Primary Antibodies
Applications:	WB
Recommended Dilution:	WB
Reactivity:	Human
Host:	Rabbit
Isotype:	IgG
Clonality:	Polyclonal
Immunogen:	The immunogen for Anti-TESC antibody is: synthetic peptide directed towards the C-terminal region of Human TESC. Synthetic peptide located within the following region: DSDGRITLEEYRNVVEELLSGNPHIEKESARSIADGAMMEAASVCMGQME
Formulation:	Liquid. Purified antibody supplied in 1x PBS buffer with 0.09% (w/v) sodium azide and 2% sucrose. <i>Note that this product is shipped as lyophilized powder to China customers.</i>
Purification:	Affinity Purified
Conjugation:	Unconjugated
Storage:	Store at -20°C as received.
Stability:	Stable for 12 months from date of receipt.
Predicted Protein Size:	23 kDa
Gene Name:	tescalcin
Database Link:	NP_060369 Entrez Gene 54997 Human Q96BS2



[View online »](#)

Background:

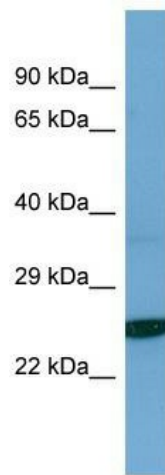
TESC functions as an integral cofactor in cell pH regulation by controlling plasma membrane-type Na⁺/H⁺ exchange activity. It promotes the maturation, transport, cell surface stability and exchange activity of SLC9A1/NHE1 at the plasma membrane and promotes the induction of hematopoietic stem cell differentiation toward megakaryocytic lineage. It is essential for the coupling of ERK cascade activation with the expression of ETS family genes in megakaryocytic differentiation. It is also involved in granulocytic differentiation in a ERK-dependent manner and inhibits the phosphatase activity of calcineurin.

Synonyms:

CHP3; TSC

Note:

Immunogen Sequence Homology: Dog: 100%; Pig: 100%; Rat: 100%; Horse: 100%; Human: 100%; Mouse: 100%; Bovine: 100%; Rabbit: 100%; Guinea pig: 100%; Yeast: 77%

Product images:

Host: Rabbit; Target Name: TESC; Sample Tissue: Jurkat Whole Cell lysates; Antibody Dilution: 1.0 ug/ml; TESC is supported by BioGPS gene expression data to be expressed in Jurkat