

## Product datasheet for **TA344951**

### C14orf119 Rabbit Polyclonal Antibody

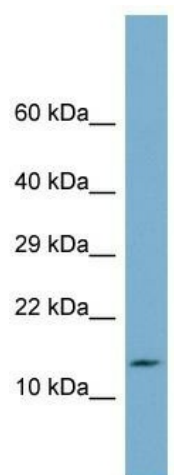
#### Product data:

Product Type:	Primary Antibodies
Applications:	WB
Recommended Dilution:	WB
Reactivity:	Human
Host:	Rabbit
Isotype:	IgG
Clonality:	Polyclonal
Immunogen:	The immunogen for Anti-C14orf119 antibody is: synthetic peptide directed towards the N-terminal region of Human C14orf119. Synthetic peptide located within the following region: SSSMPLSFPSLLPSVPHNTNPSPLMSYITSQEMKCILHWFANWSGPQRE
Formulation:	Liquid. Purified antibody supplied in 1x PBS buffer with 0.09% (w/v) sodium azide and 2% sucrose. <i>Note that this product is shipped as lyophilized powder to China customers.</i>
Purification:	Affinity Purified
Conjugation:	Unconjugated
Storage:	Store at -20°C as received.
Stability:	Stable for 12 months from date of receipt.
Predicted Protein Size:	15 kDa
Gene Name:	chromosome 14 open reading frame 119
Database Link:	<a href="#">NP_060394</a> <a href="#">Entrez Gene 55017 Human</a> <a href="#">Q9NWX9</a>
Background:	The function of this protein remains unknown.
Synonyms:	FLJ20671; FLJ21141; MGC74723
Note:	Immunogen Sequence Homology: Human: 100%



[View online »](#)

## Product images:



Host: Rabbit; Target Name: C14orf119; Sample Tissue: Fetal Kidney lysates; Antibody Dilution: 1.0 ug/ml