

Product datasheet for **TA344950**

PEX26 Rabbit Polyclonal Antibody

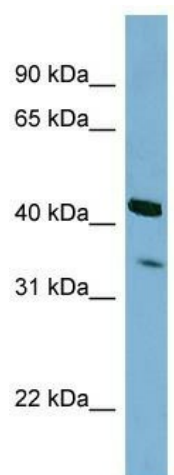
Product data:

| | |
|-------------------------|---|
| Product Type: | Primary Antibodies |
| Applications: | WB |
| Recommended Dilution: | WB |
| Reactivity: | Human |
| Host: | Rabbit |
| Isotype: | IgG |
| Clonality: | Polyclonal |
| Immunogen: | The immunogen for anti-PEX26 antibody: synthetic peptide directed towards the N terminal of human PEX26. Synthetic peptide located within the following region: MKSDSSTSAAPLRGLGGPLRSSEPVRVAVPARAPAVDLLLEEAADLLVHLD |
| Formulation: | Liquid. Purified antibody supplied in 1x PBS buffer with 0.09% (w/v) sodium azide and 2% sucrose. <i>Note that this product is shipped as lyophilized powder to China customers.</i> |
| Purification: | Affinity Purified |
| Conjugation: | Unconjugated |
| Storage: | Store at -20°C as received. |
| Stability: | Stable for 12 months from date of receipt. |
| Predicted Protein Size: | 34 kDa |
| Gene Name: | peroxisomal biogenesis factor 26 |
| Database Link: | NP_060399 Entrez Gene 55670 Human Q7Z412 |
| Background: | This gene belongs to the peroxin-26 gene family. It is probably required for protein import into peroxisomes. It anchors PEX1 and PEX6 to peroxisome membranes, possibly to form heteromeric AAA ATPase complexes required for the import of proteins into pero |
| Synonyms: | PBD7A; PBD7B; PEX26M1T; Pex26pM1T |
| Note: | Immunogen Sequence Homology: Human: 100%; Mouse: 86%; Rabbit: 86%; Pig: 85%; Rat: 79%; Bovine: 79% |



[View online »](#)

Product images:



WB Suggested Anti-PEX26 Antibody Titration: 0.2-1 ug/ml; ELISA Titer: 1:1562500; Positive Control: HepG2 cell lysate