

## Product datasheet for **TA344949**

### PEX26 Rabbit Polyclonal Antibody

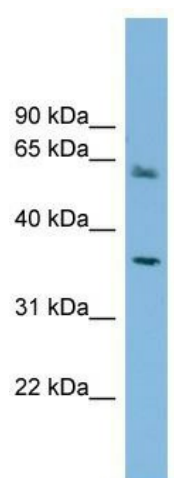
#### Product data:

Product Type:	Primary Antibodies
Applications:	WB
Recommended Dilution:	WB
Reactivity:	Human
Host:	Rabbit
Isotype:	IgG
Clonality:	Polyclonal
Immunogen:	The immunogen for anti-PEX26 antibody: synthetic peptide directed towards the middle region of human PEX26. Synthetic peptide located within the following region: ELVVGSAAFGEERRLDVQLQAIHTARQQKQEHSSEEAKPNLEGSVSHK
Formulation:	Liquid. Purified antibody supplied in 1x PBS buffer with 0.09% (w/v) sodium azide and 2% sucrose. <i>Note that this product is shipped as lyophilized powder to China customers.</i>
Purification:	Affinity Purified
Conjugation:	Unconjugated
Storage:	Store at -20°C as received.
Stability:	Stable for 12 months from date of receipt.
Predicted Protein Size:	34 kDa
Gene Name:	peroxisomal biogenesis factor 26
Database Link:	<a href="#">NP_060399</a> <a href="#">Entrez Gene 55670 Human</a> <a href="#">Q7Z412</a>
Background:	This gene belongs to the peroxin-26 gene family. It is probably required for protein import into peroxisomes. It anchors PEX1 and PEX6 to peroxisome membranes, possibly to form heteromeric AAA ATPase complexes required for the import of proteins into pero
Synonyms:	PBD7A; PBD7B; PEX26M1T; Pex26pM1T
Note:	Immunogen Sequence Homology: Human: 100%; Pig: 86%; Horse: 86%; Bovine: 79%



[View online »](#)

## Product images:



WB Suggested Anti-PEX26 Antibody Titration: 0.2-1 ug/ml; Positive Control: COLO205 cell lysate  
PEX26 is supported by BioGPS gene expression data to be expressed in COLO205