

## Product datasheet for **TA344945**

### WIPI1 Rabbit Polyclonal Antibody

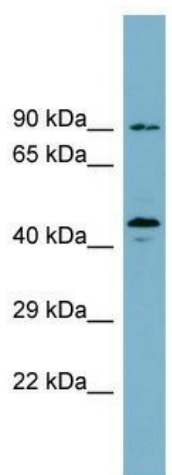
#### Product data:

|                         |   |
|-------------------------|---|
| Product Type:           | Primary Antibodies  |
| Applications:           | WB  |
| Recommended Dilution:   | WB  |
| Reactivity:             | Human   |
| Host:                   | Rabbit  |
| Isotype:                | IgG   |
| Clonality:              | Polyclonal  |
| Immunogen:              | The immunogen for anti-WIPI1 antibody: synthetic peptide directed towards the N terminal of human WIPI1. Synthetic peptide located within the following region:<br>AGYKLFSLSSVEQLDQVHGSNEIPDVYIVERLFSSSLVVVVSHTKPRQMN   |
| Formulation:            | Liquid. Purified antibody supplied in 1x PBS buffer with 0.09% (w/v) sodium azide and 2% sucrose.<br><i>Note that this product is shipped as lyophilized powder to China customers.</i>   |
| Purification:           | Affinity Purified   |
| Conjugation:            | Unconjugated  |
| Storage:                | Store at -20°C as received.   |
| Stability:              | Stable for 12 months from date of receipt.  |
| Predicted Protein Size: | 49 kDa  |
| Gene Name:              | WD repeat domain, phosphoinositide interacting 1  |
| Database Link:          | <a href="#">NP_060453</a><br><a href="#">Entrez Gene 55062 Human Q5MNZ9</a>   |
| Background:             | WD40 repeat proteins are key components of many essential biologic functions. They regulate the assembly of multiprotein complexes by presenting a beta-propeller platform for simultaneous and reversible protein-protein interactions. Members of the WIPI su |
| Synonyms:               | ATG18; ATG18A; WIPI49   |
| Note:                   | Immunogen Sequence Homology: Pig: 100%; Rat: 100%; Horse: 100%; Human: 100%; Mouse: 100%; Dog: 93%; Guinea pig: 93%; Bovine: 86%  |



[View online »](#)

## Product images:



WB Suggested Anti-WIPI1 Antibody Titration: 0.2-1 ug/ml; ELISA Titer: 1:62500; Positive Control: COLO205 cell lysate