

## Product datasheet for **TA344944**

### WIPI1 Rabbit Polyclonal Antibody

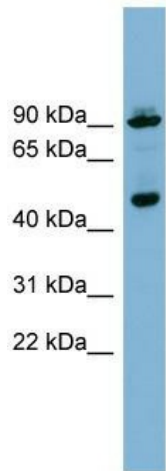
#### Product data:

Product Type:	Primary Antibodies
Applications:	WB
Recommended Dilution:	WB
Reactivity:	Human
Host:	Rabbit
Isotype:	IgG
Clonality:	Polyclonal
Immunogen:	The immunogen for anti-WIPI1 antibody: synthetic peptide directed towards the middle region of human WIPI1. Synthetic peptide located within the following region: LLGSGTTEENKENDLRPSLPQSYAATVARPSASSASTVPGYSEDGGALRG
Formulation:	Liquid. Purified antibody supplied in 1x PBS buffer with 0.09% (w/v) sodium azide and 2% sucrose. <i>Note that this product is shipped as lyophilized powder to China customers.</i>
Purification:	Affinity Purified
Conjugation:	Unconjugated
Storage:	Store at -20°C as received.
Stability:	Stable for 12 months from date of receipt.
Predicted Protein Size:	49 kDa
Gene Name:	WD repeat domain, phosphoinositide interacting 1
Database Link:	<a href="#">NP_060453</a> <a href="#">Entrez Gene 55062 Human Q5MNZ9</a>
Background:	WD40 repeat proteins are key components of many essential biologic functions. They regulate the assembly of multiprotein complexes by presenting a beta-propeller platform for simultaneous and reversible protein-protein interactions. Members of the WIPI su
Synonyms:	ATG18; ATG18A; WIPI49
Note:	Immunogen Sequence Homology: Dog: 100%; Horse: 100%; Human: 100%; Mouse: 100%; Rabbit: 100%; Pig: 93%; Rat: 93%; Guinea pig: 93%; Bovine: 92%

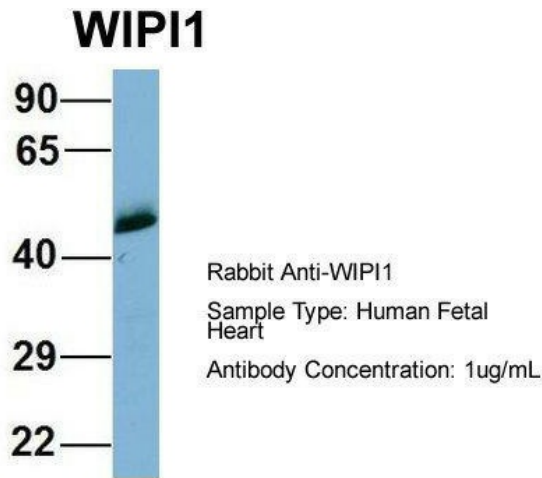


[View online »](#)

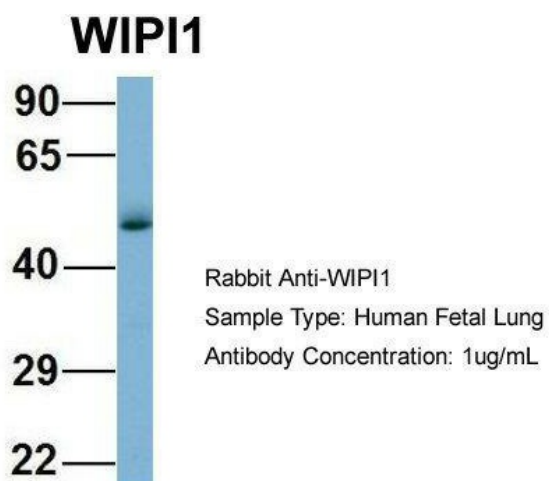
Product images:



WB Suggested Anti-WIPI1 Antibody Titration: 0.2-1 ug/ml; ELISA Titer: 1:312500; Positive Control: 293T cell lysate



Host: Rabbit; Target Name: WIPI1; Sample Tissue: Human Fetal Heart; Antibody Dilution: 1.0 ug/ml



Host: Rabbit; Target Name: WIPI1; Sample Tissue: Human Fetal Lung; Antibody Dilution: 1.0 ug/ml