

## Product datasheet for **TA344943**

### C9orf40 Rabbit Polyclonal Antibody

#### Product data:

Product Type:	Primary Antibodies
Applications:	WB
Recommended Dilution:	WB
Reactivity:	Human
Host:	Rabbit
Isotype:	IgG
Clonality:	Polyclonal
Immunogen:	The immunogen for anti-C9orf40 antibody: synthetic peptide directed towards the middle region of human C9orf40. Synthetic peptide located within the following region: HNEEFWQYNTFQYWRNPLPPIDLADIEDLSEDTLTEATLQGRNEGAEVDM
Formulation:	Liquid. Purified antibody supplied in 1x PBS buffer with 0.09% (w/v) sodium azide and 2% sucrose. <i>Note that this product is shipped as lyophilized powder to China customers.</i>
Purification:	Affinity Purified
Conjugation:	Unconjugated
Storage:	Store at -20°C as received.
Stability:	Stable for 12 months from date of receipt.
Predicted Protein Size:	21 kDa
Gene Name:	chromosome 9 open reading frame 40
Database Link:	<a href="#">NP_060468</a> <a href="#">Entrez Gene 55071 Human</a> <a href="#">Q8IXQ3</a>
Background:	The function of C9orf40 remains unknown.
Synonyms:	FLJ10110; FLJ25795
Note:	Immunogen Sequence Homology: Human: 100%; Pig: 79%; Horse: 79%



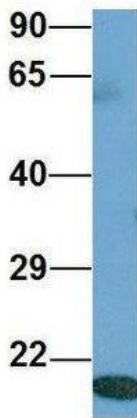
[View online »](#)

Product images:



WB Suggested Anti-C9orf40 Antibody Titration:  
0.2-1 ug/ml; ELISA Titer: 1:312500; Positive  
Control: Human brain

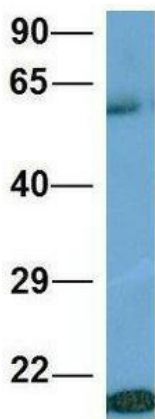
**C9orf40**



Rabbit Anti-C9orf40  
Sample Type: Human Adult  
Placenta  
Antibody Concentration: 1ug/mL

Host: Rabbit; Target Name: C9orf40; Sample  
Tissue: Human Adult Placenta; Antibody Dilution:  
1.0 ug/ml

## C9orf40



Rabbit Anti-C9orf40  
Sample Type: Human Fetal Muscle  
Antibody Concentration: 1ug/mL

Host: Rabbit; Target Name: C9orf40; Sample Tissue: Human Fetal Muscle; Antibody Dilution: 1.0 ug/ml