

Product datasheet for **TA344942**

RALGPS2 Rabbit Polyclonal Antibody

Product data:

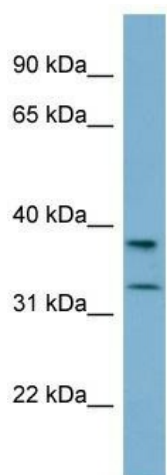
Product Type:	Primary Antibodies
Applications:	WB
Recommended Dilution:	WB
Reactivity:	Human
Host:	Rabbit
Isotype:	IgG
Clonality:	Polyclonal
Immunogen:	The immunogen for anti-RALGPS2 antibody: synthetic peptide directed towards the n terminal of human RALGPS2. Synthetic peptide located within the following region: MDLMNGQASSVNIAATASEKSSSESLSDKGSELKKSFDVVFVFLKVTTP
Formulation:	Liquid. Purified antibody supplied in 1x PBS buffer with 0.09% (w/v) sodium azide and 2% sucrose.
Purification:	Affinity Purified
Conjugation:	Unconjugated
Storage:	Store at -20°C as received.
Stability:	Stable for 12 months from date of receipt.
Predicted Protein Size:	32 kDa
Gene Name:	Ral GEF with PH domain and SH3 binding motif 2
Database Link:	NP_689876 Entrez Gene 55103 Human Q86X27
Background:	RALGPS2 is a guanine nucleotide exchange factor for the small GTPase RALA. RALGPS2 may be involved in cytoskeletal organization. RALGPS2 may also be involved in the stimulation of transcription in a Ras-independent fashion.



Synonyms: dJ595C2.1

Note: Immunogen Sequence Homology: Dog: 100%; Pig: 100%; Rat: 100%; Human: 100%; Bovine: 100%; Rabbit: 100%; Guinea pig: 100%; Horse: 93%; Mouse: 93%

Product images:



WB Suggested Anti-RALGPS2 Antibody
Titration: 0.2-1 ug/ml; Positive Control: Hela cell
lysate