

## Product datasheet for **TA344937**

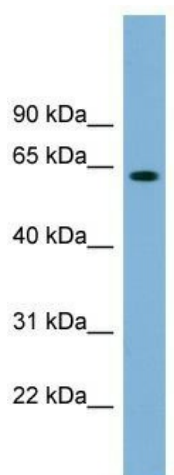
### SLFN12 Rabbit Polyclonal Antibody

#### Product data:

Product Type:	Primary Antibodies
Applications:	WB
Recommended Dilution:	WB
Reactivity:	Human
Host:	Rabbit
Isotype:	IgG
Clonality:	Polyclonal
Immunogen:	The immunogen for anti-SLFN12 antibody: synthetic peptide directed towards the middle region of human SLFN12. Synthetic peptide located within the following region: KYLLKALFKALKRLKSLRDQFSFAENLYQIIGIDCFQKNDKMKMFKSCRRL
Formulation:	Liquid. Purified antibody supplied in 1x PBS buffer with 0.09% (w/v) sodium azide and 2% sucrose.
Purification:	Affinity Purified
Conjugation:	Unconjugated
Storage:	Store at -20°C as received.
Stability:	Stable for 12 months from date of receipt.
Predicted Protein Size:	67 kDa
Gene Name:	schlafen family member 12
Database Link:	<a href="#">NP_060512</a> <a href="#">Entrez Gene 55106 Human</a> <a href="#">Q8IYM2</a>
Background:	The function of this protein remains unknown.
Synonyms:	SLFN3
Note:	Immunogen Sequence Homology: Human: 100%



[View online »](#)

**Product images:**

WB Suggested Anti-SLFN12 Antibody Titration:  
0.2-1 ug/ml; ELISA Titer: 1:62500; Positive Control:  
Human Thymus