

Product datasheet for TA344936

VG5Q (AGGF1) Rabbit Polyclonal Antibody

Product data:

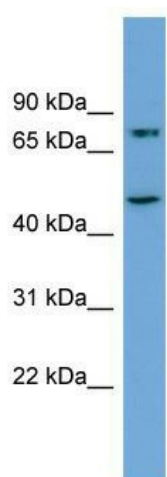
Product Type:	Primary Antibodies
Applications:	WB
Recommended Dilution:	WB
Reactivity:	Human
Host:	Rabbit
Isotype:	IgG
Clonality:	Polyclonal
Immunogen:	The immunogen for anti-AGGF1 antibody: synthetic peptide directed towards the middle region of human AGGF1. Synthetic peptide located within the following region: EYEDEKTLKNPKYKDRAGKRREQVGSSEGTFRDDAPASVHSEITDSNKGR
Formulation:	Liquid. Purified antibody supplied in 1x PBS buffer with 0.09% (w/v) sodium azide and 2% sucrose. <i>Note that this product is shipped as lyophilized powder to China customers.</i>
Purification:	Affinity Purified
Conjugation:	Unconjugated
Storage:	Store at -20°C as received.
Stability:	Stable for 12 months from date of receipt.
Predicted Protein Size:	81 kDa
Gene Name:	angiogenic factor with G-patch and FHA domains 1
Database Link:	NP_060516 Entrez Gene 55109 Human Q8N302
Background:	The AGGF1 gene encodes a potent angiogenic factor that contains a forkhead-associated domain and a G-patch domain (Tian et al., 2004 [PubMed 14961121]).
Synonyms:	GPATC7; GPATCH7; HSU84971; HUS84971; VG5Q
Note:	Immunogen Sequence Homology: Pig: 100%; Rat: 100%; Human: 100%; Mouse: 100%; Guinea pig: 100%; Dog: 93%; Horse: 93%; Bovine: 93%; Rabbit: 92%



[View online »](#)

Protein Families: Secreted Protein

Product images:



WB Suggested Anti-AGGF1 Antibody Titration:
0.2-1 ug/ml; ELISA Titer: 1:1562500; Positive
Control: 293T cell lysate AGGF1 is strongly
supported by BioGPS gene expression data to be
expressed in Human HEK293T cells