

## Product datasheet for **TA344934**

### **NODAL Rabbit Polyclonal Antibody**

#### **Product data:**

<b>Product Type:</b>	Primary Antibodies
<b>Applications:</b>	WB
<b>Recommended Dilution:</b>	WB
<b>Reactivity:</b>	Human
<b>Host:</b>	Rabbit
<b>Isotype:</b>	IgG
<b>Clonality:</b>	Polyclonal
<b>Immunogen:</b>	The immunogen for anti-NODAL antibody: synthetic peptide directed towards the middle region of human NODAL. Synthetic peptide located within the following region: EFHPTNHAYIQSLLKRYQPHRVPSTCCAPVKTPLSMLYVDNGRVLLDHH
<b>Formulation:</b>	Liquid. Purified antibody supplied in 1x PBS buffer with 0.09% (w/v) sodium azide and 2% sucrose. <i>Note that this product is shipped as lyophilized powder to China customers.</i>
<b>Purification:</b>	Affinity Purified
<b>Conjugation:</b>	Unconjugated
<b>Storage:</b>	Store at -20°C as received.
<b>Stability:</b>	Stable for 12 months from date of receipt.
<b>Predicted Protein Size:</b>	37 kDa
<b>Gene Name:</b>	nodal growth differentiation factor
<b>Database Link:</b>	<a href="#">NP_060525</a> <a href="#">Entrez Gene 4838 Human</a> <a href="#">Q96S42</a>
<b>Background:</b>	The protein encoded by this gene is a member of the TGF-beta superfamily. Studies of the mouse counterpart suggested that this gene may be essential for mesoderm formation and subsequent organization of axial structures in early embryonic development.
<b>Synonyms:</b>	HTX5
<b>Note:</b>	Immunogen Sequence Homology: Dog: 100%; Pig: 100%; Rat: 100%; Horse: 100%; Human: 100%; Mouse: 100%; Bovine: 100%; Guinea pig: 100%; Rabbit: 93%; Zebrafish: 75%

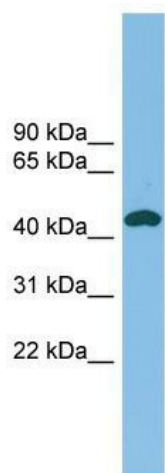


[View online »](#)

**Protein Families:** Cancer stem cells, Druggable Genome, Embryonic stem cells, ES Cell Differentiation/IPS, Induced pluripotent stem cells, Secreted Protein, Stem cell relevant signaling - TGFb/BMP signaling pathway

**Protein Pathways:** TGF-beta signaling pathway

**Product images:**



WB Suggested Anti-NODAL Antibody Titration:  
0.2-1 ug/ml; ELISA Titer: 1:1562500; Positive  
Control: THP-1 cell lysate