

## Product datasheet for **TA344931**

### MAP7D1 Rabbit Polyclonal Antibody

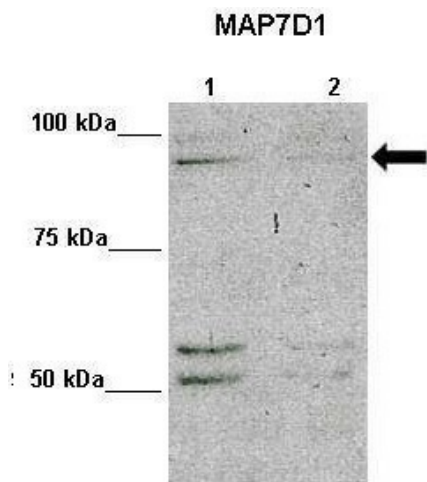
#### Product data:

Product Type:	Primary Antibodies
Applications:	WB
Recommended Dilution:	WB
Reactivity:	Human, Mouse
Host:	Rabbit
Isotype:	IgG
Clonality:	Polyclonal
Immunogen:	The immunogen for anti-MAP7D1 antibody: synthetic peptide directed towards the N terminal of human MAP7D1. Synthetic peptide located within the following region: RRRLEEQLKAEQRRRAALEERQRQKLEKNKERYEAAIQRSVKKTWAEIRQ
Formulation:	Liquid. Purified antibody supplied in 1x PBS buffer with 0.09% (w/v) sodium azide and 2% sucrose. <i>Note that this product is shipped as lyophilized powder to China customers.</i>
Purification:	Affinity Purified
Conjugation:	Unconjugated
Storage:	Store at -20°C as received.
Stability:	Stable for 12 months from date of receipt.
Predicted Protein Size:	93 kDa
Gene Name:	MAP7 domain containing 1
Database Link:	<a href="#">NP_060537</a> <a href="#">Entrez Gene 55700 Human Q3KQU3</a>
Background:	The function of this protein remains unknown.
Synonyms:	PARCC1; RPRC1
Note:	Immunogen Sequence Homology: Dog: 100%; Pig: 100%; Rat: 100%; Horse: 100%; Human: 100%; Mouse: 100%; Bovine: 100%; Rabbit: 100%; Zebrafish: 100%; Guinea pig: 100%

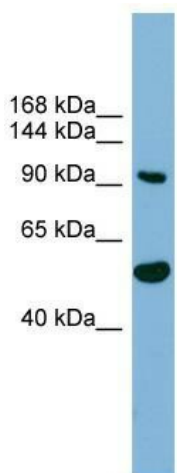


[View online »](#)

Product images:



Lanes: Lane 1: 10ug L929 lysate; Lane 2: 10ug L929+MAP7D1 siRNA; Primary Antibody Dilution: 1:1000; Secondary Antibody: Anti-rabbit HRP; Secondary Antibody Dilution: 1:2000; Gene Name: MAP7D1; Submitted by: Dr. Tencho Tenev, The Breakthrough Breast Cancer



WB Suggested Anti-MAP7D1 Antibody Titration: 0.2-1 ug/ml; Positive Control: 293T cell lysate