

Product datasheet for **TA344930**

PIWIL2 Rabbit Polyclonal Antibody

Product data:

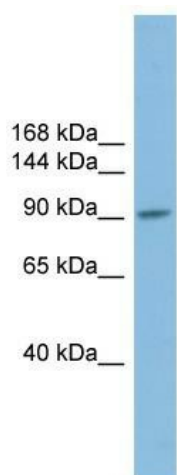
Product Type:	Primary Antibodies
Applications:	WB
Recommended Dilution:	WB
Reactivity:	Human
Host:	Rabbit
Isotype:	IgG
Clonality:	Polyclonal
Immunogen:	The immunogen for anti-PIWIL2 antibody: synthetic peptide directed towards the N terminal of human PIWIL2. Synthetic peptide located within the following region: QVLELKSQRKTDSAEISIKIQMTKILEPCSDLCIPFYNVVFRVMKLLDM
Formulation:	Liquid. Purified antibody supplied in 1x PBS buffer with 0.09% (w/v) sodium azide and 2% sucrose. <i>Note that this product is shipped as lyophilized powder to China customers.</i>
Purification:	Affinity Purified
Conjugation:	Unconjugated
Storage:	Store at -20°C as received.
Stability:	Stable for 12 months from date of receipt.
Predicted Protein Size:	110 kDa
Gene Name:	piwi like RNA-mediated gene silencing 2
Database Link:	NP_060538 Entrez Gene 55124 Human Q8TC59
Background:	PIWIL2 belongs to the Argonaute family of proteins, which function in development and maintenance of germline stem cells (Sasaki et al., 2003 [PubMed 12906857]).
Synonyms:	CT80; HILI; mili; PIWIL1L
Note:	Immunogen Sequence Homology: Pig: 100%; Human: 100%; Bovine: 100%; Rat: 93%; Horse: 93%; Mouse: 93%; Rabbit: 93%; Guinea pig: 93%; Dog: 85%



[View online »](#)

Protein Pathways: Dorso-ventral axis formation

Product images:



WB Suggested Anti-PIWIL2 Antibody Titration:
0.2-1 ug/ml; ELISA Titer: 1:1562500; Positive
Control: Human Small Intestine