

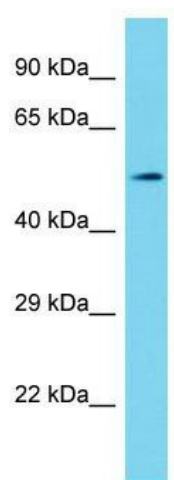
Product datasheet for TA344926

SHQ1 Rabbit Polyclonal Antibody

Product data:

Product Type:	Primary Antibodies
Applications:	WB
Recommended Dilution:	WB
Reactivity:	Mouse
Host:	Rabbit
Isotype:	IgG
Clonality:	Polyclonal
Immunogen:	The immunogen for Anti-Shq1 antibody is: synthetic peptide directed towards the N-terminal region of Mouse Shq1. Synthetic peptide located within the following region: PYFLRLTLPGRIVENGSEQGYDADKGIFTIRLPKETPGQHFEGNLMLTA
Formulation:	Liquid. Purified antibody supplied in 1x PBS buffer with 0.09% (w/v) sodium azide and 2% sucrose.
Purification:	Affinity Purified
Conjugation:	Unconjugated
Storage:	Store at -20°C as received.
Stability:	Stable for 12 months from date of receipt.
Predicted Protein Size:	50 kDa
Gene Name:	SHQ1, H/ACA ribonucleoprotein assembly factor
Database Link:	NP_060600 Entrez Gene 72171 Mouse Q6PI26
Background:	Shq1 is required for the quantitative accumulation of H/ACA ribonucleoproteins (RNPs), including telomerase, probably through the stabilization of DKC1, from the time of its synthesis until its association with NOP10, NHP2, and NAF1 at the nascent H/ACA RNA.
Synonyms:	GRIM-1; Shq1p
Note:	Immunogen Sequence Homology: Dog: 100%; Pig: 100%; Rat: 100%; Horse: 100%; Human: 100%; Mouse: 100%; Bovine: 100%; Rabbit: 100%; Guinea pig: 100%; Yeast: 83%


[View online »](#)

Product images:


Host: Rabbit; Target Name: Shq1; Sample Tissue: Mouse Stomach lysates; Antibody Dilution: 1.0 ug/ml