

Product datasheet for **TA344925**

CENPQ Rabbit Polyclonal Antibody

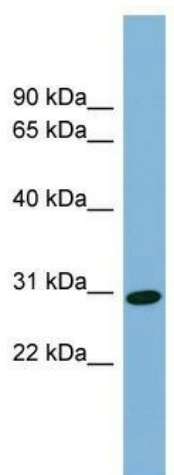
Product data:

Product Type:	Primary Antibodies
Applications:	WB
Recommended Dilution:	WB
Reactivity:	Human
Host:	Rabbit
Isotype:	IgG
Clonality:	Polyclonal
Immunogen:	The immunogen for anti-CENPQ antibody: synthetic peptide directed towards the N terminal of human CENPQ. Synthetic peptide located within the following region: VRNTVKKKNKHLKDLSSSEQTKHTNLKHGKTAASKRKTWQPLSKSTRDHL
Formulation:	Liquid. Purified antibody supplied in 1x PBS buffer with 0.09% (w/v) sodium azide and 2% sucrose. <i>Note that this product is shipped as lyophilized powder to China customers.</i>
Purification:	Affinity Purified
Conjugation:	Unconjugated
Storage:	Store at -20°C as received.
Stability:	Stable for 12 months from date of receipt.
Predicted Protein Size:	30 kDa
Gene Name:	centromere protein Q
Database Link:	NP_060602 Entrez Gene 55166 Human Q7L2Z9
Background:	CENPQ is a subunit of a CENPH (MIM 605607)-CENPI (MIM 300065)-associated centromeric complex that targets CENPA (MIM 117139) to centromeres and is required for proper kinetochore function and mitotic progression (Okada et al., 2006 [PubMed 16622420]).
Synonyms:	C6orf139; CENP-Q
Note:	Immunogen Sequence Homology: Human: 100%

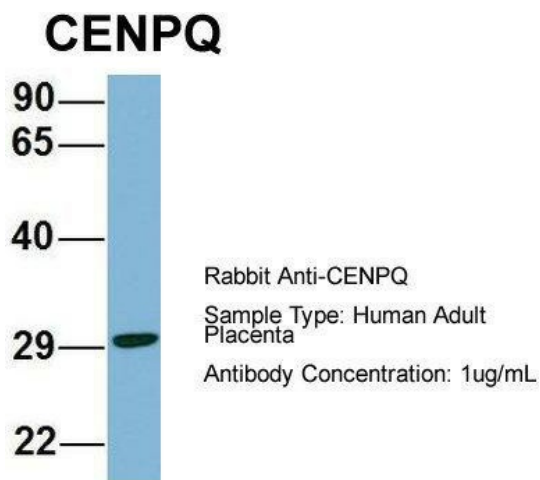


[View online »](#)

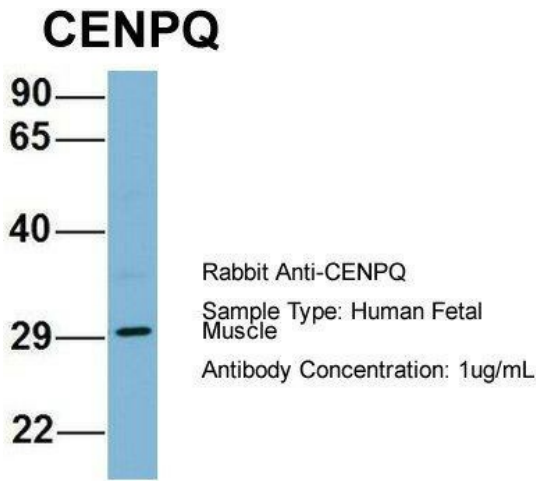
Product images:



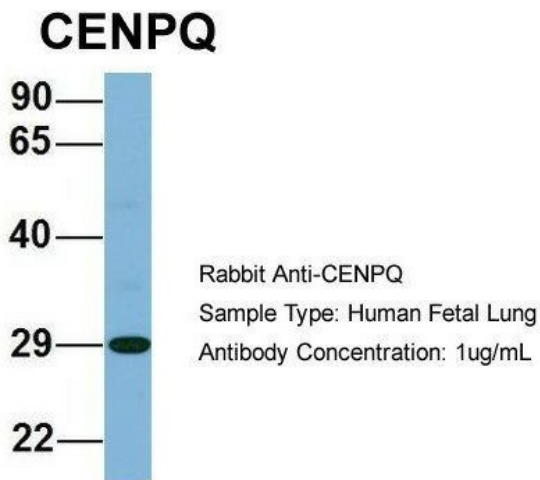
WB Suggested Anti-CENPQ Antibody Titration: 0.2-1 ug/ml; Positive Control: Human Liver



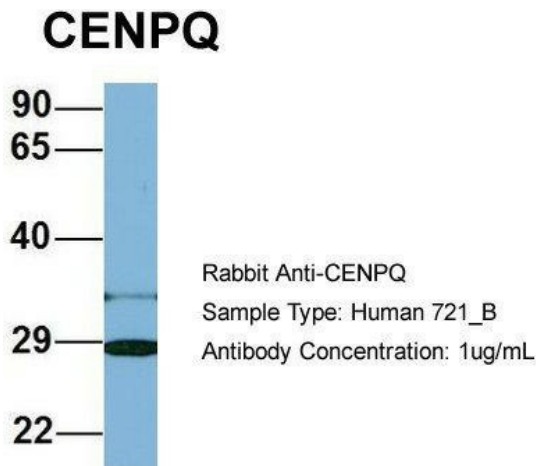
Host: Rabbit; Target Name: CENPQ; Sample Tissue: Human Adult Placenta; Antibody Dilution: 1.0 ug/ml



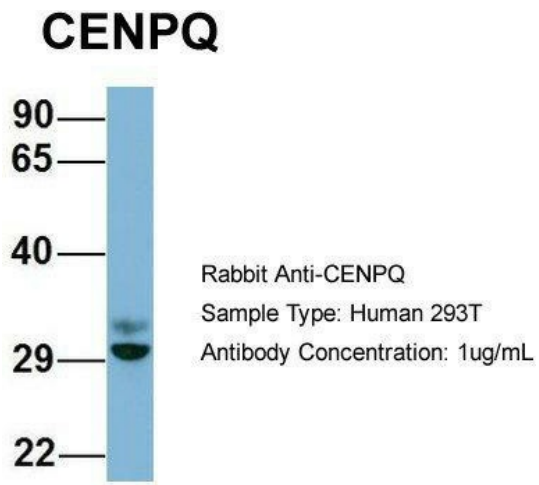
Host: Rabbit; Target Name: CENPQ; Sample Tissue: Human Fetal Muscle; Antibody Dilution: 1.0 ug/ml



Host: Rabbit; Target Name: CENPQ; Sample Tissue: Human Fetal Lung; Antibody Dilution: 1.0 ug/ml



Host: Rabbit; Target Name: CENPQ; Sample Tissue: Human 721_B; Antibody Dilution: 1.0 ug/ml; CENPQ is supported by BioGPS gene expression data to be expressed in 721_B



Host: Rabbit; Target Name: CENPQ; Sample Tissue: Human 293T; Antibody Dilution: 1.0 ug/ml; CENPQ is supported by BioGPS gene expression data to be expressed in HEK293T