

## Product datasheet for **TA344924**

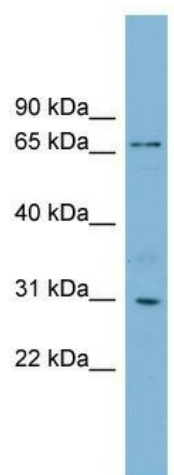
### TBCCD1 Rabbit Polyclonal Antibody

#### Product data:

Product Type:	Primary Antibodies
Applications:	WB
Recommended Dilution:	WB
Reactivity:	Human
Host:	Rabbit
Isotype:	IgG
Clonality:	Polyclonal
Immunogen:	The immunogen for anti-TBCCD1 antibody: synthetic peptide directed towards the N terminal of human TBCCD1. Synthetic peptide located within the following region: WPSPRNKSQSPDLTEKSNCHNKNWYDYSHQAFVYDHLSDLLELLDPKQL
Formulation:	Liquid. Purified antibody supplied in 1x PBS buffer with 0.09% (w/v) sodium azide and 2% sucrose. <i>Note that this product is shipped as lyophilized powder to China customers.</i>
Purification:	Affinity Purified
Conjugation:	Unconjugated
Storage:	Store at -20°C as received.
Stability:	Stable for 12 months from date of receipt.
Predicted Protein Size:	63 kDa
Gene Name:	TBCC domain containing 1
Database Link:	<a href="#">NP_060608</a> <a href="#">Entrez Gene 55171 Human Q9NVR7</a>
Background:	The function of this protein remains unknown.
Synonyms:	FLJ10560
Note:	Immunogen Sequence Homology: Human: 100%; Horse: 92%; Dog: 85%; Pig: 85%; Rabbit: 79%; Guinea pig: 79%; Bovine: 77%



[View online »](#)

**Product images:**


WB Suggested Anti-TBCCD1 Antibody Titration:  
0.2-1 ug/ml; Positive Control: Hela cell lysate