

Product datasheet for **TA344922**

C17orf71 (SMG8) Rabbit Polyclonal Antibody

Product data:

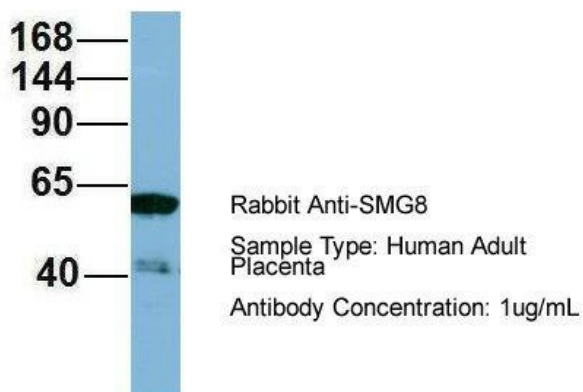
Product Type:	Primary Antibodies
Applications:	WB
Recommended Dilution:	WB
Reactivity:	Human
Host:	Rabbit
Isotype:	IgG
Clonality:	Polyclonal
Immunogen:	The immunogen for anti-C17orf71 antibody: synthetic peptide directed towards the middle region of human C17orf71. Synthetic peptide located within the following region: HCVHKFHSPLPKSGEKPEADRNPPVLYHNSRARSTGACNCGRKQAPRDDPF
Formulation:	Liquid. Purified antibody supplied in 1x PBS buffer with 0.09% (w/v) sodium azide and 2% sucrose. <i>Note that this product is shipped as lyophilized powder to China customers.</i>
Purification:	Affinity Purified
Conjugation:	Unconjugated
Storage:	Store at -20°C as received.
Stability:	Stable for 12 months from date of receipt.
Predicted Protein Size:	110 kDa
Gene Name:	SMG8, nonsense mediated mRNA decay factor
Database Link:	NP_060619 Entrez Gene 55181 Human Q8ND04
Background:	The function of this protein remains unknown.
Synonyms:	C17orf71
Note:	Immunogen Sequence Homology: Dog: 100%; Pig: 100%; Rat: 100%; Horse: 100%; Human: 100%; Mouse: 100%; Bovine: 100%; Rabbit: 100%; Guinea pig: 100%



[View online »](#)

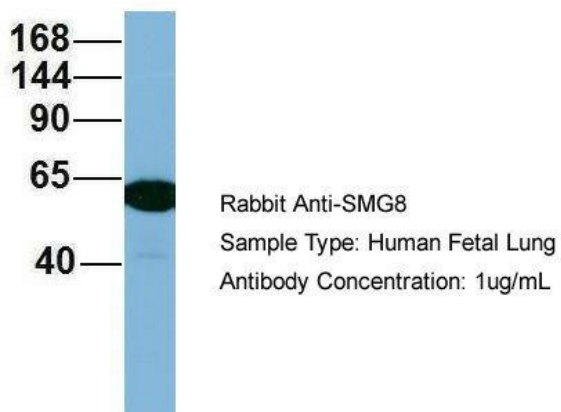
Product images:

SMG8



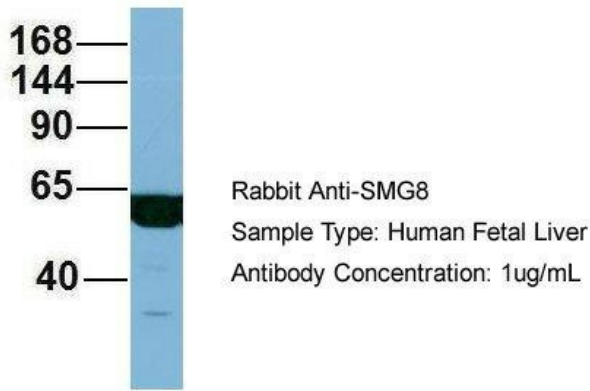
Host: Rabbit; Target Name: SMG8; Sample Tissue: Human Adult Placenta; Antibody Dilution: 1.0 ug/ml

SMG8



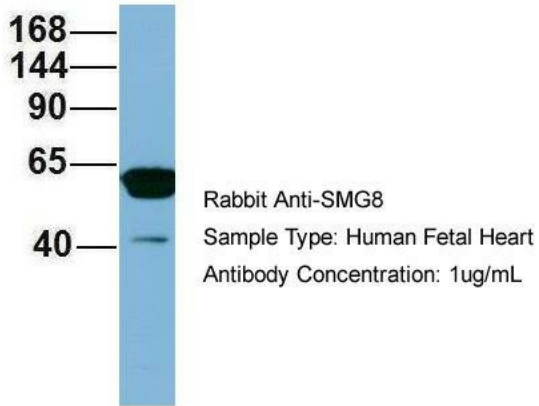
Host: Rabbit; Target Name: SMG8; Sample Tissue: Human Fetal Lung; Antibody Dilution: 1.0 ug/ml

SMG8



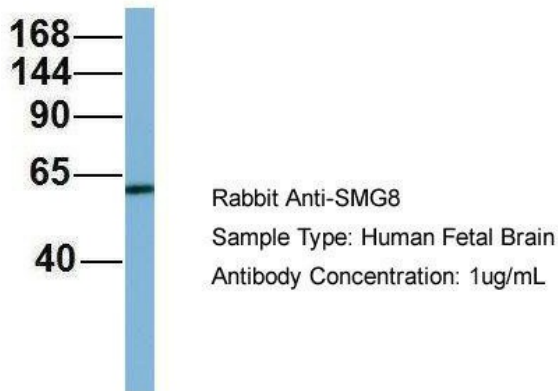
Host: Rabbit; Target Name: SMG8; Sample Tissue: Human Fetal Liver; Antibody Dilution: 1.0 µg/ml

SMG8

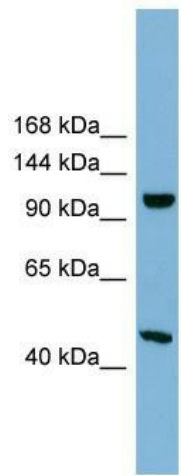


Host: Rabbit; Target Name: SMG8; Sample Tissue: Human Fetal Heart; Antibody Dilution: 1.0 µg/ml

SMG8



Host: Rabbit; Target Name: SMG8; Sample Tissue: Human Fetal Brain; Antibody Dilution: 1.0 µg/ml



WB Suggested Anti-C17orf71 Antibody Titration: 0.2-1 ug/ml; Positive Control: 721_B cell lysateSMG8 is supported by BioGPS gene expression data to be expressed in 721_B