

## Product datasheet for **TA344921**

### **RIC8 (RIC8B) Rabbit Polyclonal Antibody**

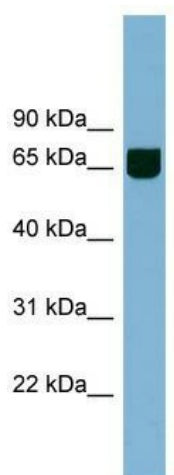
#### **Product data:**

<b>Product Type:</b>	Primary Antibodies
<b>Applications:</b>	WB
<b>Recommended Dilution:</b>	WB
<b>Reactivity:</b>	Human
<b>Host:</b>	Rabbit
<b>Isotype:</b>	IgG
<b>Clonality:</b>	Polyclonal
<b>Immunogen:</b>	The immunogen for anti-RIC8B antibody: synthetic peptide directed towards the middle region of human RIC8B. Synthetic peptide located within the following region: HQFRVMAAVLRHCLLIVGPTEDKTEELHSNAVNLLSNVPVSCLDVLCPL
<b>Formulation:</b>	Liquid. Purified antibody supplied in 1x PBS buffer with 0.09% (w/v) sodium azide and 2% sucrose.
<b>Purification:</b>	Affinity Purified
<b>Conjugation:</b>	Unconjugated
<b>Storage:</b>	Store at -20°C as received.
<b>Stability:</b>	Stable for 12 months from date of receipt.
<b>Predicted Protein Size:</b>	59 kDa
<b>Gene Name:</b>	RIC8 guanine nucleotide exchange factor B
<b>Database Link:</b>	<a href="#">NP_060627</a> <a href="#">Entrez Gene 55188 Human</a> <a href="#">Q9NVN3</a>
<b>Background:</b>	The function of this protein remains unknown.
<b>Synonyms:</b>	hSyn; RIC8
<b>Note:</b>	Immunogen Sequence Homology: Dog: 100%; Pig: 100%; Rat: 100%; Horse: 100%; Human: 100%; Mouse: 100%; Bovine: 100%; Rabbit: 100%; Guinea pig: 100%



[View online »](#)

## Product images:



WB Suggested Anti-RIC8B Antibody Titration: 0.2-1 ug/ml; Positive Control: Jurkat cell lysate