

Product datasheet for **TA344919**

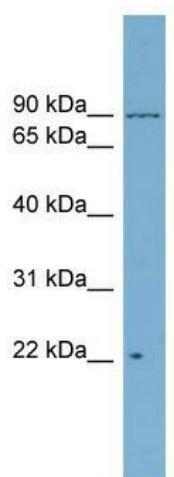
C12orf11 (ASUN) Rabbit Polyclonal Antibody

Product data:

Product Type:	Primary Antibodies
Applications:	WB
Recommended Dilution:	WB
Reactivity:	Human
Host:	Rabbit
Isotype:	IgG
Clonality:	Polyclonal
Immunogen:	The immunogen for anti-C12orf11 antibody: synthetic peptide directed towards the middle region of human C12orf11. Synthetic peptide located within the following region: VQQHFDLASTTITNIPMKEEQHANTSANYDVELLHHKDAHVDFLKSGDSH
Formulation:	Liquid. Purified antibody supplied in 1x PBS buffer with 0.09% (w/v) sodium azide and 2% sucrose.
Purification:	Affinity Purified
Conjugation:	Unconjugated
Storage:	Store at -20°C as received.
Stability:	Stable for 12 months from date of receipt.
Predicted Protein Size:	80 kDa
Gene Name:	asunder, spermatogenesis regulator
Database Link:	NP_060634 Entrez Gene 55726 Human Q9NVM9
Background:	The function of this protein remains unknown.
Synonyms:	C12orf11; GCT1; Mat89Bb; NET48; SPATA30
Note:	Immunogen Sequence Homology: Dog: 100%; Pig: 100%; Rat: 100%; Horse: 100%; Human: 100%; Mouse: 100%; Bovine: 100%; Rabbit: 100%; Zebrafish: 100%; Guinea pig: 100%


[View online »](#)

Product images:



WB Suggested Anti-C12orf11 Antibody Titration:
0.2-1 ug/ml; Positive Control: OVCAR-3 cell
lysate ASUN is supported by BioGPS gene
expression data to be expressed in OVCAR3