

Product datasheet for **TA344918**

ARL8B Rabbit Polyclonal Antibody

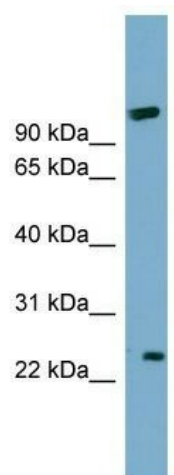
Product data:

Product Type:	Primary Antibodies
Applications:	WB
Recommended Dilution:	WB
Reactivity:	Human
Host:	Rabbit
Isotype:	IgG
Clonality:	Polyclonal
Immunogen:	The immunogen for anti-ARL8B antibody: synthetic peptide directed towards the middle region of human ARL8B. Synthetic peptide located within the following region: DIGGQPRFRSMWERYCRGVNAIVYMIDAADREKIEASRNELHNLLDKPQL
Formulation:	Liquid. Purified antibody supplied in 1x PBS buffer with 0.09% (w/v) sodium azide and 2% sucrose. <i>Note that this product is shipped as lyophilized powder to China customers.</i>
Purification:	Affinity Purified
Conjugation:	Unconjugated
Storage:	Store at -20°C as received.
Stability:	Stable for 12 months from date of receipt.
Predicted Protein Size:	21 kDa
Gene Name:	ADP ribosylation factor like GTPase 8B
Database Link:	NP_060654 Entrez Gene 55207 Human Q9NVJ2
Background:	ARL8B may play a role in lysosome motility and chromosome segregation.
Synonyms:	ARL10C; Gie1
Note:	Immunogen Sequence Homology: Dog: 100%; Pig: 100%; Rat: 100%; Horse: 100%; Human: 100%; Mouse: 100%; Sheep: 100%; Bovine: 100%; Rabbit: 100%; Zebrafish: 93%; Guinea pig: 93%



[View online »](#)

Product images:



WB Suggested Anti-ARL8B Antibody Titration: 0.2-1 ug/ml; Positive Control: COLO205 cell lysate