

## Product datasheet for **TA344917**

### ARL8B Rabbit Polyclonal Antibody

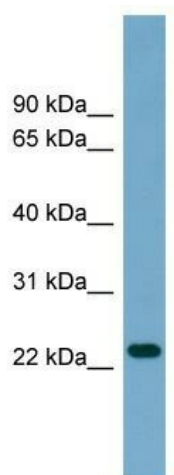
#### Product data:

Product Type:	Primary Antibodies
Applications:	WB
Recommended Dilution:	WB
Reactivity:	Human
Host:	Rabbit
Isotype:	IgG
Clonality:	Polyclonal
Immunogen:	The immunogen for anti-ARL8B antibody: synthetic peptide directed towards the middle region of human ARL8B. Synthetic peptide located within the following region: SRNELHNLLDKPQLQGIPVLVLGNKRDLPNALDEKQLIEKMNLSAIQDRE
Formulation:	Liquid. Purified antibody supplied in 1x PBS buffer with 0.09% (w/v) sodium azide and 2% sucrose. <i>Note that this product is shipped as lyophilized powder to China customers.</i>
Purification:	Affinity Purified
Conjugation:	Unconjugated
Storage:	Store at -20°C as received.
Stability:	Stable for 12 months from date of receipt.
Predicted Protein Size:	21 kDa
Gene Name:	ADP ribosylation factor like GTPase 8B
Database Link:	<a href="#">NP_060654</a> <a href="#">Entrez Gene 55207 Human</a> <a href="#">Q9NVJ2</a>
Background:	ARL8B may play a role in lysosome motility and chromosome segregation.
Synonyms:	ARL10C; Gie1
Note:	Immunogen Sequence Homology: Dog: 100%; Pig: 100%; Rat: 100%; Horse: 100%; Human: 100%; Mouse: 100%; Sheep: 100%; Bovine: 100%; Rabbit: 100%; Zebrafish: 100%; Guinea pig: 100%



[View online »](#)

## Product images:



WB Suggested Anti-ARL8B Antibody Titration: 0.2-1 ug/ml; Positive Control: THP-1 cell lysate