

Product datasheet for **TA344913**

TMLHE Rabbit Polyclonal Antibody

Product data:

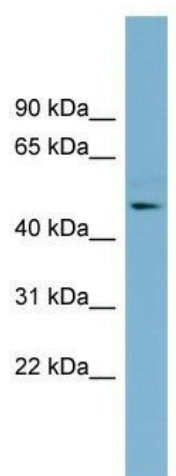
Product Type:	Primary Antibodies
Applications:	WB
Recommended Dilution:	WB
Reactivity:	Human
Host:	Rabbit
Isotype:	IgG
Clonality:	Polyclonal
Immunogen:	The immunogen for anti-TMLHE antibody: synthetic peptide directed towards the middle region of human TMLHE. Synthetic peptide located within the following region: PWNKELYLIRYNNYDRAVINTVPYDVVHRWYTAHRTLTIELRRPENEFWV
Formulation:	Liquid. Purified antibody supplied in 1x PBS buffer with 0.09% (w/v) sodium azide and 2% sucrose. <i>Note that this product is shipped as lyophilized powder to China customers.</i>
Purification:	Affinity Purified
Conjugation:	Unconjugated
Storage:	Store at -20°C as received.
Stability:	Stable for 12 months from date of receipt.
Predicted Protein Size:	49 kDa
Gene Name:	trimethyllysine hydroxylase, epsilon
Database Link:	NP_060666 Entrez Gene 55217 Human Q9NVH6
Background:	This gene encodes the protein trimethyllysine dioxygenase which is the first enzyme in the carnitine biosynthesis pathway. Carnitine play an essential role in the transport of activated fatty acids across the inner mitochondrial membrane. The encoded prot
Synonyms:	AUTSX6; BBOX2; TMLD; TMLH; TMLHED; XAP130
Note:	Immunogen Sequence Homology: Dog: 100%; Pig: 100%; Rat: 100%; Horse: 100%; Human: 100%; Mouse: 100%; Bovine: 100%; Rabbit: 100%; Zebrafish: 86%



[View online »](#)

Protein Pathways: Lysine degradation

Product images:



WB Suggested Anti-TMLHE Antibody Titration:
0.2-1 ug/ml; Positive Control: MCF7 cell lysate