

Product datasheet for **TA344912**

TMLHE Rabbit Polyclonal Antibody

Product data:

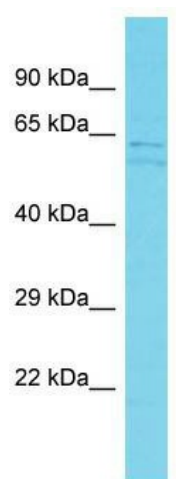
Product Type:	Primary Antibodies
Applications:	WB
Recommended Dilution:	WB
Reactivity:	Rat
Host:	Rabbit
Isotype:	IgG
Clonality:	Polyclonal
Immunogen:	The immunogen for Anti-Tmlhe antibody is: synthetic peptide directed towards the C-terminal region of Rat Tmlhe. Synthetic peptide located within the following region: ELWVKLKPGKVLFDNWRVLHGRESFTGYRQLCGCYLTRDDVLTARILG
Formulation:	Liquid. Purified antibody supplied in 1x PBS buffer with 0.09% (w/v) sodium azide and 2% sucrose. <i>Note that this product is shipped as lyophilized powder to China customers.</i>
Purification:	Affinity Purified
Conjugation:	Unconjugated
Storage:	Store at -20°C as received.
Stability:	Stable for 12 months from date of receipt.
Predicted Protein Size:	47 kDa
Gene Name:	trimethyllysine hydroxylase, epsilon
Database Link:	NP_060666 Entrez Gene 170898 Rat Q9NVH6
Background:	Tmlhe is a first enzyme in the carnitine biosynthesis pathway and plays an important role in the transport of fatty acids across the inner mitochondrial membrane.
Synonyms:	AUTSX6; BBOX2; TMLD; TMLH; TMLHED; XAP130
Note:	Immunogen Sequence Homology: Dog: 100%; Pig: 100%; Rat: 100%; Horse: 100%; Human: 100%; Mouse: 100%; Bovine: 100%; Rabbit: 100%; Zebrafish: 100%



[View online »](#)

Protein Pathways: Lysine degradation

Product images:



Host: Rabbit; Target Name: Tmlhe; Sample
Tissue: Rat Pancreas lysates; Antibody Dilution:
1.0 ug/ml